

INTS4L1/INTS4L2 Antibody (Center)

Affinity Purified Rabbit Polyclonal Antibody (Pab)

Catalog # AP18926c

Product Information

Application	WB, E
Primary Accession	Q96LV5
Reactivity	Human
Host	Rabbit
Clonality	Polyclonal
Isotype	Rabbit IgG
Clone Names	RB30544
Antigen Region	232-258

Additional Information

Other Names	Integrator complex subunit 4-like protein 1, INTS4L1
Target/Specificity	This INTS4L1/INTS4L2 antibody is generated from rabbits immunized with a KLH conjugated synthetic peptide between 232-258 amino acids from the Central region of human INTS4L1/INTS4L2.
Dilution	WB~~1:1000 E~~Use at an assay dependent concentration.
Format	Purified polyclonal antibody supplied in PBS with 0.09% (W/V) sodium azide. This antibody is purified through a protein A column, followed by peptide affinity purification.
Storage	Maintain refrigerated at 2-8°C for up to 2 weeks. For long term storage store at -20°C in small aliquots to prevent freeze-thaw cycles.
Precautions	INTS4L1/INTS4L2 Antibody (Center) is for research use only and not for use in diagnostic or therapeutic procedures.

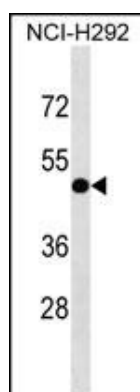
Protein Information

Background

The function of this protein remains unknown.

Images

INTS4L1/INTS4L2 Antibody (Center) (Cat. #AP18926c)
western blot analysis in NCI-H292 cell line lysates



(35ug/lane). This demonstrates the INTS4L1/INTS4L2 antibody detected the INTS4L1/INTS4L2 protein (arrow).

Please note: All products are 'FOR RESEARCH USE ONLY. NOT FOR USE IN DIAGNOSTIC OR THERAPEUTIC PROCEDURES'.