

PRR25 Antibody (C-term)

Affinity Purified Rabbit Polyclonal Antibody (Pab)

Catalog # AP18927b

Product Information

Application	WB, E
Primary Accession	Q96S07
Other Accession	NP_001013660.1
Reactivity	Human
Host	Rabbit
Clonality	Polyclonal
Isotype	Rabbit IgG
Clone Names	RB30571
Calculated MW	40998
Antigen Region	294-320

Additional Information

Other Names	Proline-rich protein 25, PRR25
Target/Specificity	This PRR25 antibody is generated from rabbits immunized with a KLH conjugated synthetic peptide between 294-320 amino acids from the C-terminal region of human PRR25.
Dilution	WB~~1:1000 E~~Use at an assay dependent concentration.
Format	Purified polyclonal antibody supplied in PBS with 0.09% (W/V) sodium azide. This antibody is purified through a protein A column, followed by peptide affinity purification.
Storage	Maintain refrigerated at 2-8°C for up to 2 weeks. For long term storage store at -20°C in small aliquots to prevent freeze-thaw cycles.
Precautions	PRR25 Antibody (C-term) is for research use only and not for use in diagnostic or therapeutic procedures.

Protein Information

Name	PRR25
-------------	-------

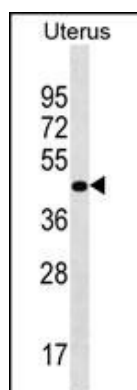
Background

The function of this protein remains unknown.

References

Daniels, R.J., et al. Hum. Mol. Genet. 10(4):339-352(2001)

Images



PRR25 Antibody (C-term) (Cat. #AP18927b) western blot analysis in Uterus tissue lysates (35ug/lane). This demonstrates the PRR25 antibody detected the PRR25 protein (arrow).

Please note: All products are 'FOR RESEARCH USE ONLY. NOT FOR USE IN DIAGNOSTIC OR THERAPEUTIC PROCEDURES'.