

# Mouse Stat2 Antibody (Center)

Affinity Purified Rabbit Polyclonal Antibody (Pab)

Catalog # AP18940c

## Product Information

---

Application	WB, E
Primary Accession	<a href="#">Q9WVL2</a>
Reactivity	Human, Mouse
Host	Rabbit
Clonality	Polyclonal
Isotype	Rabbit IgG
Clone Names	RB38660
Calculated MW	105417
Antigen Region	600-626

## Additional Information

---

Other Names	Signal transducer and activator of transcription 2, Stat2
Target/Specificity	This Mouse Stat2 antibody is generated from rabbits immunized with a KLH conjugated synthetic peptide between 600-626 amino acids from the Central region of mouse Stat2.
Dilution	WB~~1:1000 E~~Use at an assay dependent concentration.
Format	Purified polyclonal antibody supplied in PBS with 0.09% (W/V) sodium azide. This antibody is purified through a protein A column, followed by peptide affinity purification.
Storage	Maintain refrigerated at 2-8°C for up to 2 weeks. For long term storage store at -20°C in small aliquots to prevent freeze-thaw cycles.
Precautions	Mouse Stat2 Antibody (Center) is for research use only and not for use in diagnostic or therapeutic procedures.

## Protein Information

---

Name	Stat2
Function	Signal transducer and activator of transcription that mediates signaling by type I interferons (IFN-alpha and IFN-beta). Following type I IFN binding to cell surface receptors, Jak kinases (TYK2 and JAK1) are activated, leading to tyrosine phosphorylation of STAT1 and STAT2. The phosphorylated STATs dimerize, associate with IRF9/ISGF3G to form a complex termed ISGF3 transcription factor, that enters the nucleus. ISGF3 binds to the IFN stimulated response element (ISRE) to activate the transcription of interferon

stimulated genes, which drive the cell in an antiviral state. In addition, also has a negative feedback regulatory role in the type I interferon signaling by recruiting USP18 to the type I IFN receptor subunit IFNAR2 thereby mitigating the response to type I IFNs. Acts as a regulator of mitochondrial fission by modulating the phosphorylation of DNM1L at 'Ser-616' and 'Ser-637' which activate and inactivate the GTPase activity of DNM1L respectively.

**Cellular Location**

Cytoplasm {ECO:0000250|UniProtKB:P52630}. Nucleus {ECO:0000250|UniProtKB:P52630}. Note=Translocated into the nucleus upon activation by IFN-alpha/beta. {ECO:0000250|UniProtKB:P52630}

**Tissue Location**

Found in the brain, lung, heart, spleen, liver, kidney, muscle and the testis

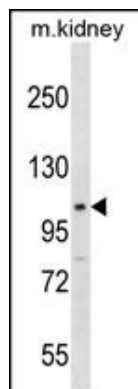
**Background**

---

Transcription factor that binds to the IFN-stimulated response element (ISRE) and to the GAS element. This multiprotein transcription factor is termed ISGF3.

**Images**

---



Mouse Stat2 Antibody (Center) (Cat. #AP18940c) western blot analysis in mouse kidney tissue lysates (35ug/lane). This demonstrates the Stat2 antibody detected the Stat2 protein (arrow).

Please note: All products are 'FOR RESEARCH USE ONLY. NOT FOR USE IN DIAGNOSTIC OR THERAPEUTIC PROCEDURES'.