

LRRC3C Antibody (C-term)

Affinity Purified Rabbit Polyclonal Antibody (Pab)

Catalog # AP18955b

Product Information

Application	WB, E
Primary Accession	A6NJW4
Other Accession	NP_001182474.1
Reactivity	Human
Host	Rabbit
Clonality	Polyclonal
Isotype	Rabbit IgG
Clone Names	RB38881
Calculated MW	29314
Antigen Region	234-260

Additional Information

Gene ID	100505591
Other Names	Leucine-rich repeat-containing protein 3C, LRRC3C
Target/Specificity	This LRRC3C antibody is generated from rabbits immunized with a KLH conjugated synthetic peptide between 234-260 amino acids from the C-terminal region of human LRRC3C.
Dilution	WB~~1:1000 E~~Use at an assay dependent concentration.
Format	Purified polyclonal antibody supplied in PBS with 0.09% (W/V) sodium azide. This antibody is purified through a protein A column, followed by peptide affinity purification.
Storage	Maintain refrigerated at 2-8°C for up to 2 weeks. For long term storage store at -20°C in small aliquots to prevent freeze-thaw cycles.
Precautions	LRRC3C Antibody (C-term) is for research use only and not for use in diagnostic or therapeutic procedures.

Protein Information

Name	LRRC3C
Cellular Location	Membrane; Single-pass membrane protein

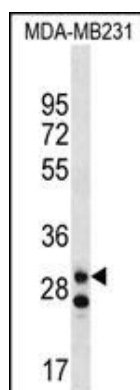
Background

The function of this protein remains unknown.

References

Soranzo, N., et al. Nat. Genet. 41(11):1182-1190(2009)

Images



LRRC3C Antibody (C-term) (Cat. #AP18955b) western blot analysis in MDA-MB231 cell line lysates (35ug/lane). This demonstrates the LRRC3C antibody detected the LRRC3C protein (arrow).

Please note: All products are 'FOR RESEARCH USE ONLY. NOT FOR USE IN DIAGNOSTIC OR THERAPEUTIC PROCEDURES'.