

GCHFR Antibody (C-term)

Affinity Purified Rabbit Polyclonal Antibody (Pab)

Catalog # AP18973b

Product Information

Application	WB, E
Primary Accession	P30047
Other Accession	Q32L41 , NP_005249.1
Reactivity	Human
Predicted	Bovine
Host	Rabbit
Clonality	Polyclonal
Isotype	Rabbit IgG
Clone Names	RB39199
Calculated MW	9698
Antigen Region	38-66

Additional Information

Gene ID	2644
Other Names	GTP cyclohydrolase 1 feedback regulatory protein, GFRP, GTP cyclohydrolase I feedback regulatory protein, p35, GCHFR, GFRP
Target/Specificity	This GCHFR antibody is generated from rabbits immunized with a KLH conjugated synthetic peptide between 38-66 amino acids from the C-terminal region of human GCHFR.
Dilution	WB~~1:1000 E~~Use at an assay dependent concentration.
Format	Purified polyclonal antibody supplied in PBS with 0.09% (W/V) sodium azide. This antibody is purified through a protein A column, followed by peptide affinity purification.
Storage	Maintain refrigerated at 2-8°C for up to 2 weeks. For long term storage store at -20°C in small aliquots to prevent freeze-thaw cycles.
Precautions	GCHFR Antibody (C-term) is for research use only and not for use in diagnostic or therapeutic procedures.

Protein Information

Name	GCHFR
Synonyms	GFRP

Function	Mediates tetrahydrobiopterin inhibition of GTP cyclohydrolase 1. This inhibition is reversed by L-phenylalanine.
Cellular Location	Nucleus. Nucleus membrane. Cytoplasm, cytosol
Tissue Location	In epidermis, expressed predominantly in basal undifferentiated keratinocytes and in some but not all melanocytes (at protein level).

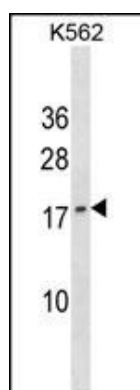
Background

GTP cyclohydrolase I feedback regulatory protein binds to and mediates tetrahydrobiopterin inhibition of GTP cyclohydrolase I. The regulatory protein, GCHFR, consists of a homodimer. It is postulated that GCHFR may play a role in regulating phenylalanine metabolism in the liver and in the production of biogenic amine neurotransmitters and nitric oxide.

References

Bailey, S.D., et al. Diabetes Care 33(10):2250-2253(2010) McHugh, P.C., et al. Pharmacogenomics J. (2010) In press : Li, L., et al. Circ. Res. 106(2):328-336(2010) Talmud, P.J., et al. Am. J. Hum. Genet. 85(5):628-642(2009) Schnetz-Boutaud, N.C., et al. Genes Brain Behav. 8(8):753-757(2009)

Images



GCHFR Antibody (C-term) (Cat. #AP18973b) western blot analysis in K562 cell line lysates (35ug/lane). This demonstrates the GCHFR antibody detected the GCHFR protein (arrow).

Please note: All products are 'FOR RESEARCH USE ONLY. NOT FOR USE IN DIAGNOSTIC OR THERAPEUTIC PROCEDURES'.