

# APBA3 Antibody (Center)

Affinity Purified Rabbit Polyclonal Antibody (Pab)

Catalog # AP18975c

## Product Information

---

<b>Application</b>	WB, E
<b>Primary Accession</b>	<a href="#">O96018</a>
<b>Other Accession</b>	<a href="#">NP_004877.1</a>
<b>Reactivity</b>	Human
<b>Host</b>	Rabbit
<b>Clonality</b>	Polyclonal
<b>Isotype</b>	Rabbit IgG
<b>Clone Names</b>	RB39201
<b>Calculated MW</b>	61454
<b>Antigen Region</b>	299-327

## Additional Information

---

<b>Gene ID</b>	9546
<b>Other Names</b>	Amyloid beta A4 precursor protein-binding family A member 3, Adapter protein X11gamma, Neuron-specific X11L2 protein, Neuronal Munc18-1-interacting protein 3, Mint-3, APBA3, MINT3, X11L2
<b>Target/Specificity</b>	This APBA3 antibody is generated from rabbits immunized with a KLH conjugated synthetic peptide between 299-327 amino acids from the Central region of human APBA3.
<b>Dilution</b>	WB~~1:1000 E~~Use at an assay dependent concentration.
<b>Format</b>	Purified polyclonal antibody supplied in PBS with 0.05% (V/V) Proclin 300. This antibody is purified through a protein A column, followed by peptide affinity purification.
<b>Storage</b>	Maintain refrigerated at 2-8°C for up to 2 weeks. For long term storage store at -20°C in small aliquots to prevent freeze-thaw cycles.
<b>Precautions</b>	APBA3 Antibody (Center) is for research use only and not for use in diagnostic or therapeutic procedures.

## Protein Information

---

<b>Name</b>	APBA3
<b>Synonyms</b>	MINT3, X11L2

<b>Function</b>	May modulate processing of the amyloid-beta precursor protein (APP) and hence formation of APP-beta. May enhance the activity of HIF1A in macrophages by inhibiting the activity of HIF1AN.
<b>Cellular Location</b>	Cytoplasm, perinuclear region
<b>Tissue Location</b>	Expressed in all tissues examined with lower levels in brain and testis

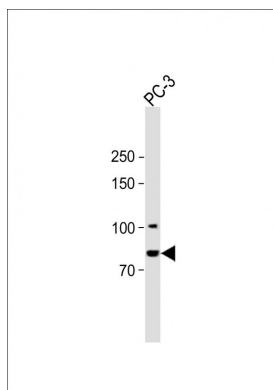
## Background

The protein encoded by this gene is a member of the X11 protein family. It is an adapter protein that interacts with the Alzheimer's disease amyloid precursor protein. This gene product is believed to be involved in signal transduction processes. This gene is a candidate gene for Alzheimer's disease.

## References

Shimada, M., et al. Hum. Genet. 128(4):433-441(2010) Swistowski, A., et al. J. Neurosci. 29(50):15703-15712(2009) Sakamoto, T., et al. J. Biol. Chem. 284(44):30350-30359(2009) Han, J., et al. J. Cell. Sci. 121 (PT 13), 2217-2223 (2008) : Shrivastava-Ranjan, P., et al. Mol. Biol. Cell 19(1):51-64(2008)

## Images



All lanes: Anti-APBA3 Antibody (Center) at 1:2000 dilution + PC-3 whole cell lysate Lysates/proteins at 20 µg per lane. Secondary: Goat Anti-Rabbit IgG, (H+L), Peroxidase conjugated (ASP1615) at 1/15000 dilution. Observed band size: 80 KDa Blocking/Dilution buffer: 5% NFDm/TBST.

Please note: All products are 'FOR RESEARCH USE ONLY. NOT FOR USE IN DIAGNOSTIC OR THERAPEUTIC PROCEDURES'.