

KCTD17 Antibody (Center)

Affinity Purified Rabbit Polyclonal Antibody (Pab)

Catalog # AP18982c

Product Information

Application	WB, E
Primary Accession	Q8N5Z5
Other Accession	NP_078957.2
Reactivity	Human
Host	Rabbit
Clonality	Polyclonal
Isotype	Rabbit IgG
Clone Names	RB39215
Calculated MW	34888
Antigen Region	107-136

Additional Information

Gene ID	79734
Other Names	BTB/POZ domain-containing protein KCTD17, KCTD17
Target/Specificity	This KCTD17 antibody is generated from rabbits immunized with a KLH conjugated synthetic peptide between 107-136 amino acids from the Central region of human KCTD17.
Dilution	WB~~1:1000 E~~Use at an assay dependent concentration.
Format	Purified polyclonal antibody supplied in PBS with 0.09% (W/V) sodium azide. This antibody is purified through a protein A column, followed by peptide affinity purification.
Storage	Maintain refrigerated at 2-8°C for up to 2 weeks. For long term storage store at -20°C in small aliquots to prevent freeze-thaw cycles.
Precautions	KCTD17 Antibody (Center) is for research use only and not for use in diagnostic or therapeutic procedures.

Protein Information

Name	KCTD17 (HGNC:25705)
Function	Substrate-adapter for CUL3-RING ubiquitin ligase complexes which mediates the ubiquitination and subsequent proteasomal degradation of TCHP, a protein involved in ciliogenesis down- regulation. Thereby, positively regulates ciliogenesis, playing a crucial role in the initial steps of axoneme

extension (PubMed:[25270598](#)). May also play a role in endoplasmic reticulum calcium ion homeostasis (PubMed:[25983243](#)).

Cellular Location Cytoplasm.

Tissue Location Highly expressed in brain. Highest expression is observed in the putamen and the thalamus

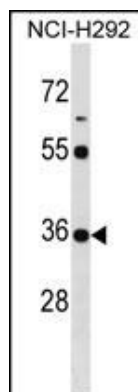
Background

The function of this protein remains unknown.

References

Dunham, I., et al. Nature 402(6761):489-495(1999)

Images



KCTD17 Antibody (Center) (Cat. #AP18982c) western blot analysis in NCI-H292 cell line lysates (35ug/lane). This demonstrates the KCTD17 antibody detected the KCTD17 protein (arrow).

Please note: All products are 'FOR RESEARCH USE ONLY. NOT FOR USE IN DIAGNOSTIC OR THERAPEUTIC PROCEDURES'.