

# RNASE2 Antibody (C-term)

Affinity Purified Rabbit Polyclonal Antibody (Pab)

Catalog # AP19003b

## Product Information

---

<b>Application</b>	WB, E
<b>Primary Accession</b>	<a href="#">P10153</a>
<b>Other Accession</b>	<a href="#">NP_002925.1</a>
<b>Reactivity</b>	Human
<b>Host</b>	Rabbit
<b>Clonality</b>	Polyclonal
<b>Isotype</b>	Rabbit IgG
<b>Clone Names</b>	RB39471
<b>Calculated MW</b>	18354
<b>Antigen Region</b>	124-152

## Additional Information

---

<b>Gene ID</b>	6036
<b>Other Names</b>	Non-secretory ribonuclease, Eosinophil-derived neurotoxin, RNase UpI-2, Ribonuclease 2, RNase 2, Ribonuclease US, RNASE2, EDN, RNS2
<b>Target/Specificity</b>	This RNASE2 antibody is generated from rabbits immunized with a KLH conjugated synthetic peptide between 124-152 amino acids from the C-terminal region of human RNASE2.
<b>Dilution</b>	WB~~1:1000 E~~Use at an assay dependent concentration.
<b>Format</b>	Purified polyclonal antibody supplied in PBS with 0.09% (W/V) sodium azide. This antibody is purified through a protein A column, followed by peptide affinity purification.
<b>Storage</b>	Maintain refrigerated at 2-8°C for up to 2 weeks. For long term storage store at -20°C in small aliquots to prevent freeze-thaw cycles.
<b>Precautions</b>	RNASE2 Antibody (C-term) is for research use only and not for use in diagnostic or therapeutic procedures.

## Protein Information

---

<b>Name</b>	RNASE2
<b>Synonyms</b>	EDN, RNS2
<b>Function</b>	This is a non-secretory ribonuclease. It is a pyrimidine specific nuclease with

a slight preference for U. Cytotoxin and helminthotoxin. Selectively chemotactic for dendritic cells. Possesses a wide variety of biological activities.

**Cellular Location**

Lysosome. Cytoplasmic granule. Note=Matrix of eosinophil's large specific granule

**Tissue Location**

Liver, lung, spleen, leukocytes and body fluids.

## Background

---

This is a non-secretory ribonuclease. It is a pyrimidine specific nuclease with a slight preference for U. Cytotoxin and helminthotoxin. Selectively chemotactic for dendritic cells. Possesses a wide variety of biological activities.

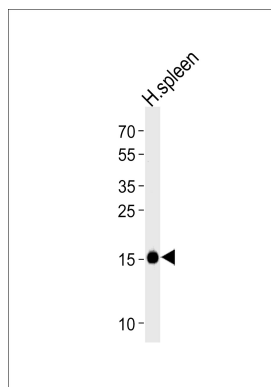
## References

---

McGovern, D.P., et al. Hum. Mol. Genet. 19(17):3468-3476(2010)  
Plager, D.A., et al. J. Immunol. 183(6):4013-4020(2009)  
Wang, H.Y., et al. J. Cell. Biochem. 106(2):317-326(2009)  
Ueki, M., et al. Cell Biochem. Funct. 26(6):718-722(2008)  
Parwez, Q., et al. J Negat Results Biomed 7, 9 (2008) :

## Images

---



Western blot analysis of lysate from human spleen tissue lysate, using RNASE2 Antibody (C-term)(Cat. #AP19003b). AP19003b was diluted at 1:1000 at each lane. A goat anti-rabbit IgG H&L(HRP) at 1:5000 dilution was used as the secondary antibody. Lysate at 35ug per lane.

Please note: All products are 'FOR RESEARCH USE ONLY. NOT FOR USE IN DIAGNOSTIC OR THERAPEUTIC PROCEDURES'.