

PMM2 Antibody (C-term)

Affinity Purified Rabbit Polyclonal Antibody (Pab)

Catalog # AP19008b

Product Information

Application	WB, E
Primary Accession	O15305
Other Accession	Q9Z2M7 , Q60HD6 , Q3SZJ9 , NP_000294.1
Reactivity	Human, Mouse, Rat
Predicted	Mouse, Monkey, Bovine
Host	Rabbit
Clonality	Polyclonal
Isotype	Rabbit IgG
Clone Names	RB39495
Calculated MW	28082
Antigen Region	198-226

Additional Information

Gene ID	5373
Other Names	Phosphomannomutase 2, PMM 2, PMM2
Target/Specificity	This PMM2 antibody is generated from rabbits immunized with a KLH conjugated synthetic peptide between 198-226 amino acids from the C-terminal region of human PMM2.
Dilution	WB~~1:1000 E~~Use at an assay dependent concentration.
Format	Purified polyclonal antibody supplied in PBS with 0.09% (W/V) sodium azide. This antibody is purified through a protein A column, followed by peptide affinity purification.
Storage	Maintain refrigerated at 2-8°C for up to 2 weeks. For long term storage store at -20°C in small aliquots to prevent freeze-thaw cycles.
Precautions	PMM2 Antibody (C-term) is for research use only and not for use in diagnostic or therapeutic procedures.

Protein Information

Name	PMM2
Function	Involved in the synthesis of the GDP-mannose and dolichol-phosphate-mannose required for a number of critical mannosyl transfer reactions.

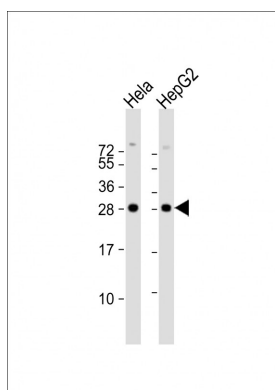
Background

The protein encoded by this gene catalyzes the isomerization of mannose 6-phosphate to mannose 1-phosphate, which is a precursor to GDP-mannose necessary for the synthesis of dolichol-P-oligosaccharides. Mutations in this gene have been shown to cause defects in glycoprotein biosynthesis, which manifests as carbohydrate-deficient glycoprotein syndrome type I. [provided by RefSeq].

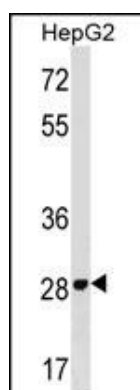
References

Vega, A.I., et al. Hum. Mutat. 30(5):795-803(2009)
Coman, D., et al. Am. J. Med. Genet. A 146(3):389-392(2008)
Vermeer, S., et al. J. Neurol. 254(10):1356-1358(2007)
Coman, D., et al. J Clin Neurosci 14(7):668-672(2007)
Schollen, E., et al. Mol. Genet. Metab. 90(4):408-413(2007)

Images



All lanes : Anti-PMM2 Antibody (C-term) at 1:1000 dilution
Lane 1: HeLa whole cell lysate Lane 2: HepG2 whole cell lysate
Lysates/proteins at 20 µg per lane. Secondary Goat Anti-Rabbit IgG, (H+L), Peroxidase conjugated at 1/10000 dilution. Predicted band size : 28 kDa
Blocking/Dilution buffer: 5% NFDM/TBST.



PMM2 Antibody (C-term) (Cat. #AP19008b) western blot analysis in HepG2 cell line lysates (35ug/lane). This demonstrates the PMM2 antibody detected the PMM2 protein (arrow).

Please note: All products are 'FOR RESEARCH USE ONLY. NOT FOR USE IN DIAGNOSTIC OR THERAPEUTIC PROCEDURES'.