

# FZR1 Antibody (N-term)

Affinity Purified Rabbit Polyclonal Antibody (Pab)

Catalog # AP19009a

## Product Information

---

Application	WB, E
Primary Accession	<a href="#">Q9UM11</a>
Other Accession	<a href="#">Q9R1K5</a> , <a href="#">NP_057347.2</a>
Reactivity	Human
Predicted	Mouse
Host	Rabbit
Clonality	Polyclonal
Isotype	Rabbit IgG
Clone Names	RB39496
Calculated MW	55179
Antigen Region	53-81

## Additional Information

---

Gene ID	51343
Other Names	Fizzy-related protein homolog, Fzr, CDC20-like protein 1, Cdh1/Hct1 homolog, hCDH1, FZR1, CDH1, FYR, FZR, KIAA1242
Target/Specificity	This FZR1 antibody is generated from rabbits immunized with a KLH conjugated synthetic peptide between 53-81 amino acids from the N-terminal region of human FZR1.
Dilution	WB~~1:1000 E~~Use at an assay dependent concentration.
Format	Purified polyclonal antibody supplied in PBS with 0.09% (W/V) sodium azide. This antibody is purified through a protein A column, followed by peptide affinity purification.
Storage	Maintain refrigerated at 2-8°C for up to 2 weeks. For long term storage store at -20°C in small aliquots to prevent freeze-thaw cycles.
Precautions	FZR1 Antibody (N-term) is for research use only and not for use in diagnostic or therapeutic procedures.

## Protein Information

---

Name	FZR1 ( <a href="#">HGNC:24824</a> )
Function	Substrate-specific adapter for the anaphase promoting complex/cyclosome (APC/C) E3 ubiquitin-protein ligase complex. Associates with the APC/C in late

mitosis, in replacement of CDC20, and activates the APC/C during anaphase and telophase. The APC/C remains active in degrading substrates to ensure that positive regulators of the cell cycle do not accumulate prematurely. At the G1/S transition FZR1 is phosphorylated, leading to its dissociation from the APC/C. Following DNA damage, it is required for the G2 DNA damage checkpoint: its dephosphorylation and reassociation with the APC/C leads to the ubiquitination of PLK1, preventing entry into mitosis. Acts as an adapter for APC/C to target the DNA-end resection factor RBBP8/CtIP for ubiquitination and subsequent proteasomal degradation. Through the regulation of RBBP8/CtIP protein turnover, may play a role in DNA damage response, favoring DNA double-strand repair through error-prone non-homologous end joining (NHEJ) over error-free, RBBP8-mediated homologous recombination (HR) (PubMed:[25349192](#)).

**Cellular Location**

[Isoform 2]: Nucleus

**Tissue Location**

Isoform 2 is expressed at high levels in heart, liver, spleen and some cancer cell lines whereas isoform 3 is expressed only at low levels in these tissues.

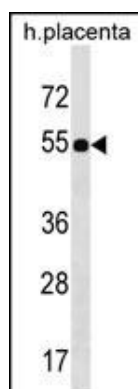
## Background

Key regulator of ligase activity of the anaphase promoting complex/cyclosome (APC/C), which confers substrate specificity upon the complex. Associates with the APC/C in late mitosis, in replacement of CDC20, and activates the APC/C during anaphase and telophase. The APC/C remains active in degrading substrates to ensure that positive regulators of the cell cycle do not accumulate prematurely. At the G1/S transition FZR1 is phosphorylated, leading to its dissociation from the APC/C. Following DNA damage, it is required for the G2 DNA damage checkpoint: its dephosphorylation and reassociation with the APC/C leads to the ubiquitination of PLK1, preventing entry into mitosis.

## References

Olson, J.E., et al. Breast Cancer Res. Treat. 125(1):221-228(2011)  
Colombo, S.L., et al. Proc. Natl. Acad. Sci. U.S.A. 107(44):18868-18873(2010)  
Naoe, H., et al. Mol. Cell. Biol. 30(16):3994-4005(2010)  
Sigl, R., et al. J. Cell. Sci. 122 (PT 22), 4208-4217 (2009) :  
Bassermann, F., et al. Cell 134(2):256-267(2008)

## Images



FZR1 Antibody (N-term) (Cat. #AP19009a) western blot analysis in human placenta tissue lysates (35ug/lane). This demonstrates the FZR1 antibody detected the FZR1 protein (arrow).

Please note: All products are 'FOR RESEARCH USE ONLY. NOT FOR USE IN DIAGNOSTIC OR THERAPEUTIC PROCEDURES'.