

CDC42EP1 Antibody (C-term)

Affinity Purified Rabbit Polyclonal Antibody (Pab)

Catalog # AP19010b

Product Information

Application	WB, E
Primary Accession	Q00587
Other Accession	NP_689449.1
Reactivity	Human
Host	Rabbit
Clonality	Polyclonal
Isotype	Rabbit IgG
Clone Names	RB39506
Calculated MW	40295
Antigen Region	315-343

Additional Information

Gene ID	11135
Other Names	Cdc42 effector protein 1, Binder of Rho GTPases 5, Serum protein MSE55, CDC42EP1, BORG5, CEP1, MSE55
Target/Specificity	This CDC42EP1 antibody is generated from rabbits immunized with a KLH conjugated synthetic peptide between 315-343 amino acids from the C-terminal region of human CDC42EP1.
Dilution	WB~~1:1000 E~~Use at an assay dependent concentration.
Format	Purified polyclonal antibody supplied in PBS with 0.09% (W/V) sodium azide. This antibody is purified through a protein A column, followed by peptide affinity purification.
Storage	Maintain refrigerated at 2-8°C for up to 2 weeks. For long term storage store at -20°C in small aliquots to prevent freeze-thaw cycles.
Precautions	CDC42EP1 Antibody (C-term) is for research use only and not for use in diagnostic or therapeutic procedures.

Protein Information

Name	CDC42EP1
Synonyms	BORG5, CEP1, MSE55
Function	Probably involved in the organization of the actin cytoskeleton. Induced

membrane extensions in fibroblasts.

Cellular Location

Endomembrane system; Peripheral membrane protein. Cytoplasm, cytoskeleton

Tissue Location

Endothelial and bone marrow stromal cells.

Background

CDC42 is a member of the Rho GTPase family that regulates multiple cellular activities, including actin polymerization. The protein encoded by this gene is a CDC42 binding protein that mediates actin cytoskeleton reorganization at the plasma membrane. This protein is secreted and is primarily found in bone marrow.

References

Sugiyama, N., et al. Mol. Cell Proteomics 6(6):1103-1109(2007)

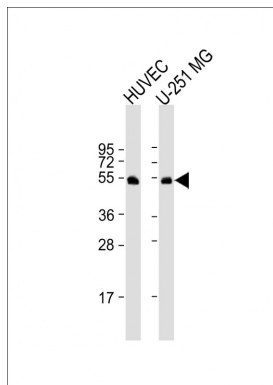
Olsen, J.V., et al. Cell 127(3):635-648(2006)

Olsen, J.V., et al. Cell 127(3):635-648(2006)

Zhang, J., et al. Mol. Biol. Cell 16(2):824-834(2005)

Ballif, B.A., et al. Mol. Cell Proteomics 3(11):1093-1101(2004)

Images



All lanes : Anti-CDC42EP1 Antibody (C-term) at 1:1000 dilution Lane 1: HUVEC whole cell lysate Lane 2: U-251 MG whole cell lysate Lysates/proteins at 20 µg per lane. Secondary Goat Anti-Rabbit IgG, (H+L), Peroxidase conjugated at 1/10000 dilution. Predicted band size : 40 kDa Blocking/Dilution buffer: 5% NFDM/TBST.

Please note: All products are 'FOR RESEARCH USE ONLY. NOT FOR USE IN DIAGNOSTIC OR THERAPEUTIC PROCEDURES'.