

PSG6 Antibody (N-term)

Affinity Purified Rabbit Polyclonal Antibody (Pab)

Catalog # AP19013a

Product Information

Application	WB, E
Primary Accession	Q00889
Other Accession	NP_001027020.1
Reactivity	Human
Host	Rabbit
Clonality	Polyclonal
Isotype	Rabbit IgG
Clone Names	RB39512
Calculated MW	48814
Antigen Region	22-48

Additional Information

Gene ID	5675
Other Names	Pregnancy-specific beta-1-glycoprotein 6, PS-beta-G-6, PSBG-6, Pregnancy-specific glycoprotein 6, Pregnancy-specific beta-1-glycoprotein 10, PS-beta-G-10, PSBG-10, Pregnancy-specific glycoprotein 10, Pregnancy-specific beta-1-glycoprotein 12, PS-beta-G-12, PSBG-12, Pregnancy-specific glycoprotein 12, PSG6, CGM3, PSG10, PSG12, PSGGB
Target/Specificity	This PSG6 antibody is generated from rabbits immunized with a KLH conjugated synthetic peptide between 22-48 amino acids from the N-terminal region of human PSG6.
Dilution	WB~~1:1000 E~~Use at an assay dependent concentration.
Format	Purified polyclonal antibody supplied in PBS with 0.09% (W/V) sodium azide. This antibody is purified through a protein A column, followed by peptide affinity purification.
Storage	Maintain refrigerated at 2-8°C for up to 2 weeks. For long term storage store at -20°C in small aliquots to prevent freeze-thaw cycles.
Precautions	PSG6 Antibody (N-term) is for research use only and not for use in diagnostic or therapeutic procedures.

Protein Information

Name	PSG6
-------------	------

Synonyms CGM3, PSG10, PSG12, PSGGB

Cellular Location Secreted.

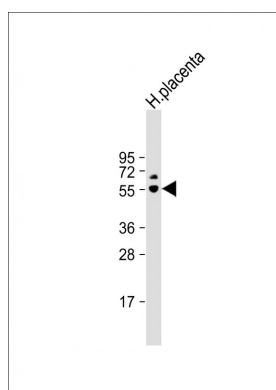
Background

The human pregnancy-specific glycoproteins (PSGs) are a group of molecules that are mainly produced by the placental syncytiotrophoblasts during pregnancy. PSGs comprise a subgroup of the carcinoembryonic antigen (CEA) family, which belongs to the immunoglobulin superfamily. For additional general information about the PSG gene family, see PSG1 (MIM 176390).[supplied by OMIM].

References

Grimwood, J., et al. Nature 428(6982):529-535(2004)
Teglund, S., et al. Biochem. Biophys. Res. Commun. 211(2):656-664(1995)
Olsen, A., et al. Genomics 23(3):659-668(1994)
Barnett, T.R., et al. Biochemistry 29(44):10213-10218(1990)
Leslie, K.K., et al. Proc. Natl. Acad. Sci. U.S.A. 87(15):5822-5826(1990)

Images



Anti-PSG6 Antibody (N-term) at 1:1000 dilution + human placenta lysate Lysates/proteins at 20 µg per lane. Secondary Goat Anti-Rabbit IgG, (H+L), Peroxidase conjugated at 1/10000 dilution. Predicted band size : 49 kDa Blocking/Dilution buffer: 5% NFDM/TBST.

Please note: All products are 'FOR RESEARCH USE ONLY. NOT FOR USE IN DIAGNOSTIC OR THERAPEUTIC PROCEDURES'.