

# ABI3BP Antibody (Center)

Affinity Purified Rabbit Polyclonal Antibody (Pab)

Catalog # AP19014c

## Product Information

---

Application	WB, E
Primary Accession	<a href="#">Q7Z7G0</a>
Other Accession	<a href="#">NP_056244.2</a>
Reactivity	Human
Host	Rabbit
Clonality	Polyclonal
Isotype	Rabbit IgG
Clone Names	RB39513
Calculated MW	117895
Antigen Region	648-675

## Additional Information

---

Gene ID	25890
Other Names	Target of Nesh-SH3, Tarsh, ABI gene family member 3-binding protein, Nesh-binding protein, NeshBP, ABI3BP, NESHBP, TARSH
Target/Specificity	This ABI3BP antibody is generated from rabbits immunized with a KLH conjugated synthetic peptide between 648-675 amino acids from the Central region of human ABI3BP.
Dilution	WB~~1:1000 E~~Use at an assay dependent concentration.
Format	Purified polyclonal antibody supplied in PBS with 0.09% (W/V) sodium azide. This antibody is purified through a protein A column, followed by peptide affinity purification.
Storage	Maintain refrigerated at 2-8°C for up to 2 weeks. For long term storage store at -20°C in small aliquots to prevent freeze-thaw cycles.
Precautions	ABI3BP Antibody (Center) is for research use only and not for use in diagnostic or therapeutic procedures.

## Protein Information

---

Name	ABI3BP ( <a href="#">HGNC:17265</a> )
Synonyms	NESHBP, TARSH
Cellular Location	Secreted.

**Tissue Location**

Expressed in brain, heart, lung, liver, pancreas kidney and placenta.

**Background**

---

The function of this protein remains unknown.

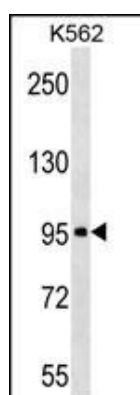
**References**

---

Trynka, G., et al. Gut 58(8):1078-1083(2009)  
Wakoh, T., et al. Biochem. Biophys. Res. Commun. 380(4):807-812(2009)  
Latini, F.R., et al. Endocr. Relat. Cancer 15(3):787-799(2008)  
Terauchi, K., et al. J. Cancer Res. Clin. Oncol. 132(1):28-34(2006)  
Uekawa, N., et al. Biochem. Biophys. Res. Commun. 329(3):1031-1038(2005)

**Images**

---



ABI3BP Antibody (Center) (Cat. #AP19014c) western blot analysis in K562 cell line lysates (35ug/lane). This demonstrates the ABI3BP antibody detected the ABI3BP protein (arrow).

Please note: All products are 'FOR RESEARCH USE ONLY. NOT FOR USE IN DIAGNOSTIC OR THERAPEUTIC PROCEDURES'.