

# PAPPAS Antibody (N-term)

Affinity Purified Rabbit Polyclonal Antibody (Pab)

Catalog # AP19022a

## Product Information

---

<b>Application</b>	WB, E
<b>Primary Accession</b>	<a href="#">Q5QFB9</a>
<b>Reactivity</b>	Human
<b>Host</b>	Rabbit
<b>Clonality</b>	Polyclonal
<b>Isotype</b>	Rabbit IgG
<b>Clone Names</b>	RB39605
<b>Calculated MW</b>	12196
<b>Antigen Region</b>	1-30

## Additional Information

---

<b>Other Names</b>	Protein PAPPAS, DIPLA1 antisense RNA 1, DIPLA1 antisense gene protein 1, DIPLA1-antisense expressed, PAPPAS antisense RNA 1, PAPPAS antisense gene protein 1, PAPPAS-antisense expressed, PAPPA-AS1, DIPAS, PAPPAS
<b>Target/Specificity</b>	This PAPPAS antibody is generated from rabbits immunized with a KLH conjugated synthetic peptide between 1-30 amino acids from the N-terminal region of human PAPPAS.
<b>Dilution</b>	WB~~1:1000 E~~Use at an assay dependent concentration.
<b>Format</b>	Purified polyclonal antibody supplied in PBS with 0.09% (W/V) sodium azide. This antibody is purified through a protein A column, followed by peptide affinity purification.
<b>Storage</b>	Maintain refrigerated at 2-8°C for up to 2 weeks. For long term storage store at -20°C in small aliquots to prevent freeze-thaw cycles.
<b>Precautions</b>	PAPPAS Antibody (N-term) is for research use only and not for use in diagnostic or therapeutic procedures.

## Protein Information

---

<b>Name</b>	PAPPA-AS1
<b>Synonyms</b>	DIPAS, PAPPAS
<b>Cellular Location</b>	Endoplasmic reticulum membrane; Multi-pass membrane protein
<b>Tissue Location</b>	Expressed in placenta with lower expression in brain, kidney and testis.

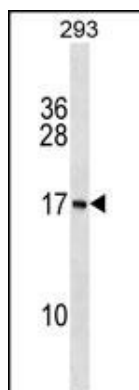
## Background

---

The function of this protein remains unknown.

## Images

---



PAPPAS Antibody (N-term) (Cat. #AP19022a) western blot analysis in 293 cell line lysates (35ug/lane). This demonstrates the PAPPAS antibody detected the PAPPAS protein (arrow).

Please note: All products are 'FOR RESEARCH USE ONLY. NOT FOR USE IN DIAGNOSTIC OR THERAPEUTIC PROCEDURES'.