

RNF224 Antibody (Center)

Affinity Purified Rabbit Polyclonal Antibody (Pab)

Catalog # AP19034c

Product Information

Application	WB, E
Primary Accession	P0DH78
Reactivity	Human
Host	Rabbit
Clonality	Polyclonal
Isotype	Rabbit IgG
Clone Names	RB39666
Calculated MW	16549
Antigen Region	79-105

Additional Information

Gene ID	643596
Other Names	RING finger protein 224, RNF224
Target/Specificity	This RNF224 antibody is generated from rabbits immunized with a KLH conjugated synthetic peptide between 79-105 amino acids from the Central region of human RNF224.
Dilution	WB~~1:1000 E~~Use at an assay dependent concentration.
Format	Purified polyclonal antibody supplied in PBS with 0.09% (W/V) sodium azide. This antibody is purified through a protein A column, followed by peptide affinity purification.
Storage	Maintain refrigerated at 2-8°C for up to 2 weeks. For long term storage store at -20°C in small aliquots to prevent freeze-thaw cycles.
Precautions	RNF224 Antibody (Center) is for research use only and not for use in diagnostic or therapeutic procedures.

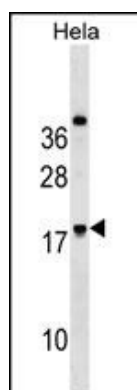
Protein Information

Name	RNF224
------	--------

Background

The function of this protein remains unknown.

Images



RNF224 Antibody (Center) (Cat. #AP19034c) western blot analysis in HeLa cell line lysates (35ug/lane). This demonstrates the RNF224 antibody detected the RNF224 protein (arrow).

Please note: All products are 'FOR RESEARCH USE ONLY. NOT FOR USE IN DIAGNOSTIC OR THERAPEUTIC PROCEDURES'.