

# RPS17L Antibody (Center)

Affinity Purified Rabbit Polyclonal Antibody (Pab)

Catalog # AP19045c

## Product Information

---

<b>Application</b>	WB, E
<b>Primary Accession</b>	<a href="#">P0CW22</a>
<b>Other Accession</b>	<a href="#">P04644</a> , <a href="#">Q6QAP7</a> , <a href="#">P63276</a> , <a href="#">P08708</a> , <a href="#">P63274</a> , <a href="#">P08636</a> , <a href="#">A5PK63</a> , <a href="#">NP_001012.1</a>
<b>Reactivity</b>	Human
<b>Predicted</b>	Bovine, Chicken, Hamster, Mouse, Pig, Rat
<b>Host</b>	Rabbit
<b>Clonality</b>	Polyclonal
<b>Isotype</b>	Rabbit IgG
<b>Clone Names</b>	RB39782
<b>Antigen Region</b>	77-103

## Additional Information

---

<b>Other Names</b>	40S ribosomal protein S17-like, RPS17L
<b>Target/Specificity</b>	This RPS17L antibody is generated from rabbits immunized with a KLH conjugated synthetic peptide between 77-103 amino acids from the Central region of human RPS17L.
<b>Dilution</b>	WB~~1:1000 E~~Use at an assay dependent concentration.
<b>Format</b>	Purified polyclonal antibody supplied in PBS with 0.09% (W/V) sodium azide. This antibody is purified through a protein A column, followed by peptide affinity purification.
<b>Storage</b>	Maintain refrigerated at 2-8°C for up to 2 weeks. For long term storage store at -20°C in small aliquots to prevent freeze-thaw cycles.
<b>Precautions</b>	RPS17L Antibody (Center) is for research use only and not for use in diagnostic or therapeutic procedures.

## Protein Information

---

### Background

---

Ribosomes, the organelles that catalyze protein synthesis, consist of a small 40S subunit and a large 60S subunit. Together these subunits are composed of 4 RNA species and approximately 80 structurally distinct proteins. This gene encodes a ribosomal protein that is a component of the 40S subunit. The protein belongs to the S17E family of ribosomal proteins. It is located in the cytoplasm. As is typical for genes encoding ribosomal proteins, there are multiple processed pseudogenes of this gene dispersed through the

genome.

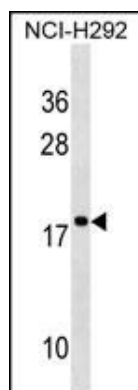
## References

---

Konno, Y., et al. *Haematologica* 95(8):1293-1299(2010)  
Gazda, H.T., et al. *Am. J. Hum. Genet.* 83(6):769-780(2008)  
Robledo, S., et al. *RNA* 14(9):1918-1929(2008)  
Campagnoli, M.F., et al. *Hum. Mutat.* 29(7):911-920(2008)  
Cmejla, R., et al. *Hum. Mutat.* 28(12):1178-1182(2007)

## Images

---



RPS17L Antibody (Center) (Cat. #AP19045c) western blot analysis in NCI-H292 cell line lysates (35ug/lane). This demonstrates the RPS17L antibody detected the RPS17L protein (arrow).

Please note: All products are 'FOR RESEARCH USE ONLY. NOT FOR USE IN DIAGNOSTIC OR THERAPEUTIC PROCEDURES'.