

RREB1 Antibody (C-term)

Affinity Purified Rabbit Polyclonal Antibody (Pab)

Catalog # AP19046b

Product Information

Application	WB, E
Primary Accession	Q92766
Other Accession	NP_001003698.1
Reactivity	Human
Host	Rabbit
Clonality	Polyclonal
Isotype	Rabbit IgG
Clone Names	RB39783
Calculated MW	181420
Antigen Region	1398-1424

Additional Information

Gene ID	6239
Other Names	Ras-responsive element-binding protein 1, RREB-1, Finger protein in nuclear bodies, Raf-responsive zinc finger protein LZ321, Zinc finger motif enhancer-binding protein 1, Zep-1, RREB1, FINB
Target/Specificity	This RREB1 antibody is generated from rabbits immunized with a KLH conjugated synthetic peptide between 1398-1424 amino acids from the C-terminal region of human RREB1.
Dilution	WB~~1:1000 E~~Use at an assay dependent concentration.
Format	Purified polyclonal antibody supplied in PBS with 0.05% (V/V) Proclin 300. This antibody is purified through a protein A column, followed by peptide affinity purification.
Storage	Maintain refrigerated at 2-8°C for up to 2 weeks. For long term storage store at -20°C in small aliquots to prevent freeze-thaw cycles.
Precautions	RREB1 Antibody (C-term) is for research use only and not for use in diagnostic or therapeutic procedures.

Protein Information

Name	RREB1
Synonyms	FINB

Function	Transcription factor that binds specifically to the RAS- responsive elements (RRE) of gene promoters (PubMed: 10390538 , PubMed: 15067362 , PubMed: 17550981 , PubMed: 8816445 , PubMed: 9305772). Represses the angiotensinogen gene (PubMed: 15067362). Negatively regulates the transcriptional activity of AR (PubMed: 17550981). Potentiates the transcriptional activity of NEUROD1 (PubMed: 12482979). Promotes brown adipocyte differentiation (By similarity). May be involved in Ras/Raf-mediated cell differentiation by enhancing calcitonin expression (PubMed: 8816445).
Cellular Location	Nucleus speckle
Tissue Location	Expressed in heart, placenta, lung, liver, skeletal muscle, kidney and pancreas. Not found in the brain

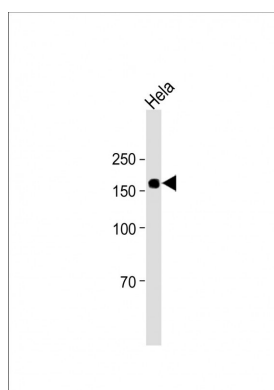
Background

The protein encoded by this gene is a zinc finger transcription factor that binds to RAS-responsive elements (RREs) of gene promoters. It has been shown that the calcitonin gene promoter contains an RRE and that the encoded protein binds there and increases expression of calcitonin, which may be involved in Ras/Raf-mediated cell differentiation. Multiple transcript variants encoding several different isoforms have been found for this gene.

References

Rose, J.E., et al. Mol. Med. 16 (7-8), 247-253 (2010) :
 Neale, B.M., et al. Proc. Natl. Acad. Sci. U.S.A. 107(16):7395-7400(2010)
 Milon, B.C., et al. Prostate 70(3):288-296(2010)
 Flajollet, S., et al. J. Immunol. 183(11):6948-6959(2009)
 Liu, H., et al. Biochem. J. 422(3):543-551(2009)

Images



All lanes: Anti-RREB1 Antibody (C-term) at 1:2000 dilution + HeLa whole cell lysate Lysates/proteins at 20 µg per lane. Secondary: Goat Anti-Rabbit IgG, (H+L), Peroxidase conjugated (ASP1615) at 1/15000 dilution. Observed band size: 181 KDa Blocking/Dilution buffer: 5% NFDM/TBST.

Please note: All products are 'FOR RESEARCH USE ONLY. NOT FOR USE IN DIAGNOSTIC OR THERAPEUTIC PROCEDURES'.