

AMMECR1 Antibody (C-term)

Affinity Purified Rabbit Polyclonal Antibody (Pab)

Catalog # AP19068b

Product Information

Application	WB, E
Primary Accession	Q9Y4X0
Other Accession	Q9JHT5 , NP_001020751.1
Reactivity	Human, Mouse
Predicted	Mouse
Host	Rabbit
Clonality	Polyclonal
Isotype	Rabbit IgG
Clone Names	RB39848
Calculated MW	35463
Antigen Region	271-298

Additional Information

Gene ID	9949
Other Names	AMME syndrome candidate gene 1 protein, AMMECR1
Target/Specificity	This AMMECR1 antibody is generated from rabbits immunized with a KLH conjugated synthetic peptide between 271-298 amino acids from the C-terminal region of human AMMECR1.
Dilution	WB~~1:1000 E~~Use at an assay dependent concentration.
Format	Purified polyclonal antibody supplied in PBS with 0.09% (W/V) sodium azide. This antibody is purified through a protein A column, followed by peptide affinity purification.
Storage	Maintain refrigerated at 2-8°C for up to 2 weeks. For long term storage store at -20°C in small aliquots to prevent freeze-thaw cycles.
Precautions	AMMECR1 Antibody (C-term) is for research use only and not for use in diagnostic or therapeutic procedures.

Protein Information

Name	AMMECR1
Cellular Location	Nucleus.

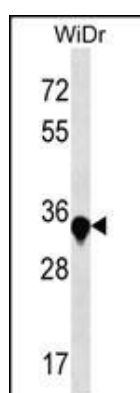
Background

The exact function of this gene is not known, however, submicroscopic deletion of the X chromosome including this gene, COL4A5, and FACL4 genes, result in a contiguous gene deletion syndrome, the AMME complex (Alport syndrome, mental retardation, midface hypoplasia, and elliptocytosis). Alternatively spliced transcript variants encoding different isoforms have been found for this gene.

References

Lamesch, P., et al. Genomics 89(3):307-315(2007)
Ross, M.T., et al. Nature 434(7031):325-337(2005)
Tajika, Y., et al. Proteins 58(2):501-503(2005)
Vitelli, F., et al. Genomics 55(3):335-340(1999)
Piccini, M., et al. Genomics 47(3):350-358(1998)

Images



AMMECR1 Antibody (C-term) (Cat. #AP19068b) western blot analysis in WiDr cell line lysates (35ug/lane). This demonstrates the AMMECR1 antibody detected the AMMECR1 protein (arrow).

Please note: All products are 'FOR RESEARCH USE ONLY. NOT FOR USE IN DIAGNOSTIC OR THERAPEUTIC PROCEDURES'.