

# HILS1 Antibody (N-term)

Affinity Purified Rabbit Polyclonal Antibody (Pab)

Catalog # AP19069a

## Product Information

---

Application	WB, E
Primary Accession	<a href="#">P60008</a>
Reactivity	Human
Host	Rabbit
Clonality	Polyclonal
Isotype	Rabbit IgG
Clone Names	RB39855
Calculated MW	25632
Antigen Region	46-72

## Additional Information

---

Other Names	Spermatid-specific linker histone H1-like protein, HILS1
Target/Specificity	This HILS1 antibody is generated from rabbits immunized with a KLH conjugated synthetic peptide between 46-72 amino acids from the N-terminal region of human HILS1.
Dilution	WB~~1:1000 E~~Use at an assay dependent concentration.
Format	Purified polyclonal antibody supplied in PBS with 0.09% (W/V) sodium azide. This antibody is purified through a protein A column, followed by peptide affinity purification.
Storage	Maintain refrigerated at 2-8°C for up to 2 weeks. For long term storage store at -20°C in small aliquots to prevent freeze-thaw cycles.
Precautions	HILS1 Antibody (N-term) is for research use only and not for use in diagnostic or therapeutic procedures.

## Protein Information

---

Name	H1-9P ( <a href="#">HGNC:30616</a> )
Function	DNA-binding protein that may be implicated in chromatin remodeling and/or transcriptional regulation during spermiogenesis, the process of spermatid maturation into spermatozoa.
Cellular Location	Nucleus {ECO:0000255 PROSITE-ProRule:PRU00837}. Chromosome {ECO:0000255 PROSITE-ProRule:PRU00837}

**Tissue Location**

Expressed exclusively in the testis.

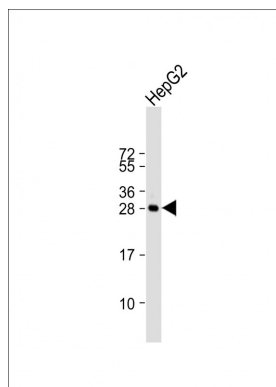
**Background**

---

Implicated in chromatin remodeling and/or transcriptional regulation during spermiogenesis, the process of spermatid maturation into spermatozoa.

**Images**

---



Anti-HILS1 Antibody (N-term) at 1:1000 dilution + HepG2 whole cell lysate Lysates/proteins at 20 µg per lane. Secondary Goat Anti-Rabbit IgG, (H+L), Peroxidase conjugated at 1/10000 dilution. Predicted band size : 26 kDa Blocking/Dilution buffer: 5% NFDM/TBST.

Please note: All products are 'FOR RESEARCH USE ONLY. NOT FOR USE IN DIAGNOSTIC OR THERAPEUTIC PROCEDURES'.