

SPANXE Antibody (Center)

Affinity Purified Rabbit Polyclonal Antibody (Pab)

Catalog # AP19072c

Product Information

Application	WB, E
Primary Accession	Q8TAD1
Other Accession	Q9NY87 , Q9NS25 , NP_663698.1
Reactivity	Human
Host	Rabbit
Clonality	Polyclonal
Isotype	Rabbit IgG
Clone Names	RB39880
Antigen Region	39-65

Additional Information

Other Names	Sperm protein associated with the nucleus on the X chromosome E, Nuclear-associated protein SPAN-Xe, SPANX-E, SPANX family member E, SPANXE
Target/Specificity	This SPANXE antibody is generated from rabbits immunized with a KLH conjugated synthetic peptide between 39-65 amino acids from the Central region of human SPANXE.
Dilution	WB~~1:1000 E~~Use at an assay dependent concentration.
Format	Purified polyclonal antibody supplied in PBS with 0.09% (W/V) sodium azide. This antibody is purified through a protein A column, followed by peptide affinity purification.
Storage	Maintain refrigerated at 2-8°C for up to 2 weeks. For long term storage store at -20°C in small aliquots to prevent freeze-thaw cycles.
Precautions	SPANXE Antibody (Center) is for research use only and not for use in diagnostic or therapeutic procedures.

Protein Information

Background

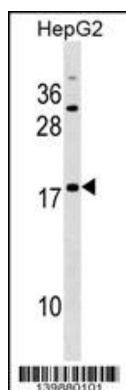
Temporally regulated transcription and translation of several testis-specific genes is required to initiate the series of molecular and morphological changes in the male germ cell lineage necessary for the formation of mature spermatozoa. This gene is a member of the SPANX family of cancer/testis-associated genes, which are located in a cluster on chromosome X. The SPANX genes encode differentially expressed testis-specific

proteins that localize to various subcellular compartments. This particular gene encodes a sperm protein that contains a consensus nuclear localization signal but, although a role in spermatogenesis is suggested, the specific function of this family member has not yet been determined.

References

Hansen, S., et al. Syst Biol Reprod Med 55, 18-26 (2010) :
Kouprina, N., et al. Genome Res. 15(11):1477-1486(2005)
Zendman, A.J., et al. Gene 309(2):125-133(2003)
Westbrook, V.A., et al. Biol. Reprod. 64(1):345-358(2001)

Images



SPANXE Antibody (Center) (Cat. #AP19072c) western blot analysis in HepG2 cell line lysates (35ug/lane). This demonstrates the SPANXE antibody detected the SPANXE protein (arrow).

Please note: All products are 'FOR RESEARCH USE ONLY. NOT FOR USE IN DIAGNOSTIC OR THERAPEUTIC PROCEDURES'.