

# TRGC2 Antibody (N-term)

Affinity Purified Rabbit Polyclonal Antibody (Pab)

Catalog # AP19092a

## Product Information

---

Application	WB, E
Primary Accession	<a href="#">P03986</a>
Other Accession	<a href="#">P0CF51</a>
Reactivity	Human
Host	Rabbit
Clonality	Polyclonal
Isotype	Rabbit IgG
Clone Names	RB39925
Calculated MW	21698
Antigen Region	1-30

## Additional Information

---

Other Names	T-cell receptor gamma-2 chain C region, T-cell receptor gamma chain C region PT-gamma-1/2, TRGC2, TCRGC2
Target/Specificity	This TRGC2 antibody is generated from rabbits immunized with a KLH conjugated synthetic peptide between 1-30 amino acids from the N-terminal region of human TRGC2.
Dilution	WB~~1:1000 E~~Use at an assay dependent concentration.
Format	Purified polyclonal antibody supplied in PBS with 0.09% (W/V) sodium azide. This antibody is purified through a protein A column, followed by peptide affinity purification.
Storage	Maintain refrigerated at 2-8°C for up to 2 weeks. For long term storage store at -20°C in small aliquots to prevent freeze-thaw cycles.
Precautions	TRGC2 Antibody (N-term) is for research use only and not for use in diagnostic or therapeutic procedures.

## Protein Information

---

Name	TRGC2 {ECO:0000303 Ref.4}
Function	Constant region of T cell receptor (TR) gamma chain that participates in the antigen recognition (PubMed: <a href="#">24600447</a> ). Gamma-delta TRs recognize a variety of self and foreign non-peptide antigens frequently expressed at the epithelial boundaries between the host and external environment, including endogenous lipids presented by MH-like protein CD1D and phosphoantigens

presented by butyrophilin-like molecule BTN3A1. Upon antigen recognition induces rapid, innate-like immune responses involved in pathogen clearance and tissue repair (PubMed:[23348415](#), PubMed:[28920588](#)). Binding of gamma-delta TR complex to antigen triggers phosphorylation of immunoreceptor tyrosine-based activation motifs (ITAMs) in the CD3 chains by the LCK and FYN kinases, allowing the recruitment, phosphorylation, and activation of ZAP70 that facilitates phosphorylation of the scaffolding proteins LCP2 and LAT. This lead to the formation of a supramolecular signalosome that recruits the phospholipase PLCG1, resulting in calcium mobilization and ERK activation, ultimately leading to T cell expansion and differentiation into effector cells (PubMed:[25674089](#)). Gamma-delta TRs are produced through somatic rearrangement of a limited repertoire of variable (V), diversity (D), and joining (J) genes. The potential diversity of gamma-delta TRs is conferred by the unique ability to rearrange (D) genes in tandem and to utilize all three reading frames. The combinatorial diversity is considerably increased by the sequence exonuclease trimming and random nucleotide (N) region additions which occur during the V-(D)-J rearrangements (PubMed:[24387714](#)).

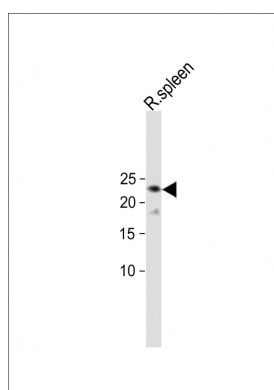
#### Cellular Location

Cell membrane.

## Background

T cell receptors (TCR) recognize foreign antigens which have been processed as small peptides and bound to major histocompatibility complex (MHC) molecules at the surface of antigen presenting cells (APC). Each T cell receptor is a dimer consisting of one  $\alpha$  and one  $\beta$  chain or one  $\delta$  and one  $\gamma$  chain. This region represents the germline organization of the T cell receptor beta locus. The beta locus includes V (variable), J (joining), diversity (D), and C (constant) segments. During T cell development, the beta chain is synthesized by a recombination event at the DNA level joining a D segment with a J segment; a V segment is then joined to the D-J gene. The C segment is later joined by splicing at the RNA level. The  $\gamma/\delta$  TCR associates with CD3 and is expressed on a T cell subset found in the thymus, the intestinal epithelium, and the peripheral lymphoid tissues and peritoneum. Most  $\gamma/\delta$  T cells are CD4<sup>-</sup>/CD8<sup>-</sup>, some are CD8<sup>+</sup>. T cells expressing the  $\gamma/\delta$  TCR have been shown to play a role in oral tolerance, tumor-associated tolerance, and autoimmune disease.

## Images



All lanes: Anti-TRGC2 Antibody (N-term) at dilution 1:500 + rat spleen lysate Lysates/proteins at 20  $\mu$ g per lane. Secondary Goat Anti-Rabbit IgG, (H+L), Peroxidase conjugated (ASP1615) E42at 1/15000 dilution. Observed band size: 22KDa Blocking/Dilution buffer: 5% NFDM/TBST.

Please note: All products are 'FOR RESEARCH USE ONLY. NOT FOR USE IN DIAGNOSTIC OR THERAPEUTIC PROCEDURES'.