

RXFP3 Antibody (C-term)

Affinity Purified Rabbit Polyclonal Antibody (Pab)

Catalog # AP19132b

Product Information

Application	WB, E
Primary Accession	Q9NSD7
Other Accession	NP_057652.1
Reactivity	Human
Host	Rabbit
Clonality	Polyclonal
Isotype	Rabbit IgG
Clone Names	RB30587
Calculated MW	51124
Antigen Region	404-432

Additional Information

Gene ID	51289
Other Names	Relaxin-3 receptor 1, RLN3 receptor 1, G protein-coupled receptor SALPR, G-protein coupled receptor GPCR135, Relaxin family peptide receptor 3, Somatostatin- and angiotensin-like peptide receptor, RXFP3, RLN3R1, SALPR
Target/Specificity	This RXFP3 antibody is generated from rabbits immunized with a KLH conjugated synthetic peptide between 404-432 amino acids from the C-terminal region of human RXFP3.
Dilution	WB~~1:1000 E~~Use at an assay dependent concentration.
Format	Purified polyclonal antibody supplied in PBS with 0.09% (W/V) sodium azide. This antibody is purified through a protein A column, followed by peptide affinity purification.
Storage	Maintain refrigerated at 2-8°C for up to 2 weeks. For long term storage store at -20°C in small aliquots to prevent freeze-thaw cycles.
Precautions	RXFP3 Antibody (C-term) is for research use only and not for use in diagnostic or therapeutic procedures.

Protein Information

Name	RXFP3
Synonyms	GPCR135, RLN3R1, SALPR

Function	Receptor for RNL3/relaxin-3. Binding of the ligand inhibit cAMP accumulation.
Cellular Location	Cell membrane; Multi-pass membrane protein.
Tissue Location	Expressed predominantly in brain regions. Highest expression in substantia nigra and pituitary, followed by hippocampus, spinal cord, amygdala, caudate nucleus and corpus callosum, quite low level in cerebellum. In peripheral tissues, relatively high levels in adrenal glands, low levels in pancreas, salivary gland, placenta, mammary gland and testis

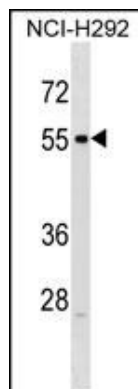
Background

RXFP3 is a receptor for RNL3/relaxin-3. Binding of the ligand inhibit cAMP accumulation.

References

Huang, Y.W., et al. Gynecol. Oncol. 117(2):239-247(2010)
van der Westhuizen, E.T., et al. Mol. Pharmacol. 77(5):759-772(2010)
Hossain, M.A., et al. Chem Biol Drug Des 73(1):46-52(2009)
Zhu, J., et al. Eur. J. Pharmacol. 590 (1-3), 43-52 (2008) :
Hossain, M.A., et al. J. Biol. Chem. 283(25):17287-17297(2008)

Images



RXFP3 Antibody (C-term) (Cat. #AP19132b) western blot analysis in NCI-H292 cell line lysates (35ug/lane). This demonstrates the RXFP3 antibody detected the RXFP3 protein (arrow).

Please note: All products are 'FOR RESEARCH USE ONLY. NOT FOR USE IN DIAGNOSTIC OR THERAPEUTIC PROCEDURES'.