

CTRB1 Antibody (Center)

Affinity Purified Rabbit Polyclonal Antibody (Pab)

Catalog # AP19142c

Product Information

Application	WB, E
Primary Accession	P17538
Other Accession	Q6GPI1
Reactivity	Human
Host	Rabbit
Clonality	Polyclonal
Isotype	Rabbit IgG
Clone Names	RB38743
Calculated MW	27713
Antigen Region	145-171

Additional Information

Gene ID	1504
Other Names	Chymotrypsinogen B, Chymotrypsin B chain A, Chymotrypsin B chain B, Chymotrypsin B chain C, CTRB1, CTRB
Target/Specificity	This CTRB1 antibody is generated from rabbits immunized with a KLH conjugated synthetic peptide between 145-171 amino acids from the Central region of human CTRB1.
Dilution	WB~~1:1000 E~~Use at an assay dependent concentration.
Format	Purified polyclonal antibody supplied in PBS with 0.09% (W/V) sodium azide. This antibody is purified through a protein A column, followed by peptide affinity purification.
Storage	Maintain refrigerated at 2-8°C for up to 2 weeks. For long term storage store at -20°C in small aliquots to prevent freeze-thaw cycles.
Precautions	CTRB1 Antibody (Center) is for research use only and not for use in diagnostic or therapeutic procedures.

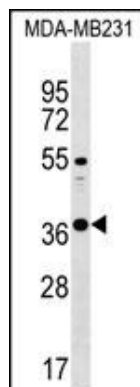
Protein Information

Name	CTRB1 (HGNC:2521)
Cellular Location	Secreted, extracellular space.

Background

CTRB1 (Chymotrypsinogen B1) is the inactive precursor of Alpha chymotrypsin, one of a family of serine proteases secreted into the gastrointestinal tract. The zymogen is activated by proteolytic cleavage by trypsin.

Images



CTRB1 Antibody (Center) (Cat. #AP19142c) western blot analysis in MDA-MB231 cell line lysates (35ug/lane). This demonstrates the CTRB1 antibody detected the CTRB1 protein (arrow).

Please note: All products are 'FOR RESEARCH USE ONLY. NOT FOR USE IN DIAGNOSTIC OR THERAPEUTIC PROCEDURES'.