

# LRRC69 Antibody (Center)

Affinity Purified Rabbit Polyclonal Antibody (Pab)

Catalog # AP19147c

## Product Information

---

<b>Application</b>	WB, E
<b>Primary Accession</b>	<a href="#">Q6ZNO3</a>
<b>Other Accession</b>	<a href="#">NP_001123362.1</a>
<b>Reactivity</b>	Human
<b>Host</b>	Rabbit
<b>Clonality</b>	Polyclonal
<b>Isotype</b>	Rabbit IgG
<b>Clone Names</b>	RB38882
<b>Calculated MW</b>	39592
<b>Antigen Region</b>	200-227

## Additional Information

---

<b>Gene ID</b>	100130742
<b>Other Names</b>	Leucine-rich repeat-containing protein 69, LRRC69
<b>Target/Specificity</b>	This LRRC69 antibody is generated from rabbits immunized with a KLH conjugated synthetic peptide between 200-227 amino acids from the Central region of human LRRC69.
<b>Dilution</b>	WB~~1:1000 E~~Use at an assay dependent concentration.
<b>Format</b>	Purified polyclonal antibody supplied in PBS with 0.09% (W/V) sodium azide. This antibody is purified through a protein A column, followed by peptide affinity purification.
<b>Storage</b>	Maintain refrigerated at 2-8°C for up to 2 weeks. For long term storage store at -20°C in small aliquots to prevent freeze-thaw cycles.
<b>Precautions</b>	LRRC69 Antibody (Center) is for research use only and not for use in diagnostic or therapeutic procedures.

## Protein Information

---

<b>Name</b>	LRRC69
-------------	--------

## Background

---

The function of this protein remains unknown.

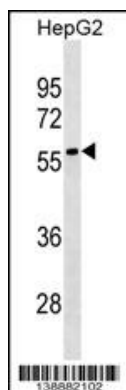
## References

---

Ota, T., et al. Nat. Genet. 36(1):40-45(2004)

## Images

---



LRRC69 Antibody (Center) (Cat. #AP19147c) western blot analysis in HepG2 cell line lysates (35ug/lane). This demonstrates the LRRC69 antibody detected the LRRC69 protein (arrow).

Please note: All products are 'FOR RESEARCH USE ONLY. NOT FOR USE IN DIAGNOSTIC OR THERAPEUTIC PROCEDURES'.