

# MRPL11 Antibody (N-term)

Affinity Purified Rabbit Polyclonal Antibody (Pab)

Catalog # AP19151a

## Product Information

---

Application	WB, E
Primary Accession	<a href="#">Q9Y3B7</a>
Other Accession	<a href="#">NP_057134.1</a>
Reactivity	Human
Host	Rabbit
Clonality	Polyclonal
Isotype	Rabbit IgG
Clone Names	RB38899
Calculated MW	20683
Antigen Region	36-62

## Additional Information

---

Gene ID	65003
Other Names	39S ribosomal protein L11, mitochondrial, L11mt, MRP-L11, MRPL11
Target/Specificity	This MRPL11 antibody is generated from rabbits immunized with a KLH conjugated synthetic peptide between 36-62 amino acids from the N-terminal region of human MRPL11.
Dilution	WB~~1:1000 E~~Use at an assay dependent concentration.
Format	Purified polyclonal antibody supplied in PBS with 0.09% (W/V) sodium azide. This antibody is purified through a protein A column, followed by peptide affinity purification.
Storage	Maintain refrigerated at 2-8°C for up to 2 weeks. For long term storage store at -20°C in small aliquots to prevent freeze-thaw cycles.
Precautions	MRPL11 Antibody (N-term) is for research use only and not for use in diagnostic or therapeutic procedures.

## Protein Information

---

Name	MRPL11
Cellular Location	Mitochondrion

## Background

---

Mammalian mitochondrial ribosomal proteins are encoded by nuclear genes and help in protein synthesis within the mitochondrion. Mitochondrial ribosomes (mitoribosomes) consist of a small 28S subunit and a large 39S subunit. They have an estimated 75% protein to rRNA composition compared to prokaryotic ribosomes, where this ratio is reversed. Another difference between mammalian mitoribosomes and prokaryotic ribosomes is that the latter contain a 5S rRNA. Among different species, the proteins comprising the mitoribosome differ greatly in sequence, and sometimes in biochemical properties, which prevents easy recognition by sequence homology. This gene encodes a 39S subunit protein. Sequence analysis identified three transcript variants that encode different isoforms. Pseudogenes corresponding to this gene are found on chromosomes 5q and 12q.

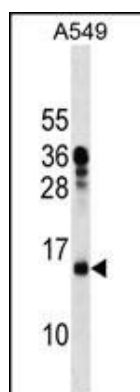
## References

---

Dai, M.S., et al. Cell Cycle 6(22):2735-2741(2007)  
Sun, X.X., et al. J. Biol. Chem. 282(11):8052-8059(2007)  
Wang, A.G., et al. Biochem. Biophys. Res. Commun. 345(3):1022-1032(2006)  
Oh, J.H., et al. Mamm. Genome 16(12):942-954(2005)  
Voronina, E.N., et al. Mol. Biol. (Mosk.) 37(3):425-435(2003)

## Images

---



MRPL11 Antibody (N-term) (Cat. #AP19151a) western blot analysis in A549 cell line lysates (35ug/lane). This demonstrates the MRPL11 antibody detected the MRPL11 protein (arrow).

Please note: All products are 'FOR RESEARCH USE ONLY. NOT FOR USE IN DIAGNOSTIC OR THERAPEUTIC PROCEDURES'.