

CD200R1L Antibody (N-term)

Affinity Purified Rabbit Polyclonal Antibody (Pab)

Catalog # AP19174a

Product Information

Application	WB, E
Primary Accession	Q6Q8B3
Other Accession	NP_001008784.2
Reactivity	Human
Host	Rabbit
Clonality	Polyclonal
Isotype	Rabbit IgG
Clone Names	RB39516
Calculated MW	29920
Antigen Region	63-92

Additional Information

Gene ID	344807
Other Names	Cell surface glycoprotein CD200 receptor 2, CD200 cell surface glycoprotein receptor-like 2, CD200 receptor-like 2, HuCD200R2, CD200 cell surface glycoprotein receptor-like a, CD200RLa, Cell surface glycoprotein CD200 receptor 1-like, Cell surface glycoprotein OX2 receptor 2, CD200R1L, CD200R2
Target/Specificity	This CD200R1L antibody is generated from rabbits immunized with a KLH conjugated synthetic peptide between 63-92 amino acids from the N-terminal region of human CD200R1L.
Dilution	WB~~1:1000 E~~Use at an assay dependent concentration.
Format	Purified polyclonal antibody supplied in PBS with 0.09% (W/V) sodium azide. This antibody is purified through a protein A column, followed by peptide affinity purification.
Storage	Maintain refrigerated at 2-8°C for up to 2 weeks. For long term storage store at -20°C in small aliquots to prevent freeze-thaw cycles.
Precautions	CD200R1L Antibody (N-term) is for research use only and not for use in diagnostic or therapeutic procedures.

Protein Information

Name	CD200R1L
Synonyms	CD200R2

Function	May be a receptor for the CD200/OX2 cell surface glycoprotein.
Cellular Location	Membrane; Single-pass type I membrane protein

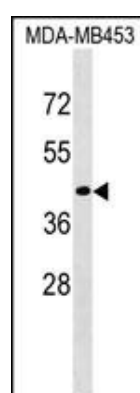
Background

CD200R1L may be a receptor for the CD200/OX2 cell surface glycoprotein (By similarity).

References

Minas, K., et al. Crit. Rev. Immunol. 26(3):213-230(2006)
 Voehringer, D., et al. J. Biol. Chem. 279(52):54117-54123(2004)
 Wright, G.J., et al. J. Immunol. 171(6):3034-3046(2003)

Images



CD200R1L Antibody (N-term) (Cat. #AP19174a) western blot analysis in MDA-MB453 cell line lysates (35ug/lane). This demonstrates the CD200R1L antibody detected the CD200R1L protein (arrow).

Please note: All products are 'FOR RESEARCH USE ONLY. NOT FOR USE IN DIAGNOSTIC OR THERAPEUTIC PROCEDURES'.