

RETNLB Antibody (Center)

Affinity Purified Rabbit Polyclonal Antibody (Pab)

Catalog # AP19178c

Product Information

Application	WB, E
Primary Accession	Q9BQ08
Other Accession	NP_115968.1
Reactivity	Human
Host	Rabbit
Clonality	Polyclonal
Isotype	Rabbit IgG
Clone Names	RB39655
Calculated MW	11730
Antigen Region	27-52

Additional Information

Gene ID	84666
Other Names	Resistin-like beta, Colon and small intestine-specific cysteine-rich protein, Colon carcinoma-related gene protein, Cysteine-rich secreted protein A12-alpha-like 1, Cysteine-rich secreted protein FIZZ2, RELMbeta, RETNLB, CCRG, FIZZ2, HXCP2, RETNL2
Target/Specificity	This RETNLB antibody is generated from rabbits immunized with a KLH conjugated synthetic peptide between 27-52 amino acids from the Central region of human RETNLB.
Dilution	WB~~1:1000 E~~Use at an assay dependent concentration.
Format	Purified polyclonal antibody supplied in PBS with 0.09% (W/V) sodium azide. This antibody is purified through a protein A column, followed by peptide affinity purification.
Storage	Maintain refrigerated at 2-8°C for up to 2 weeks. For long term storage store at -20°C in small aliquots to prevent freeze-thaw cycles.
Precautions	RETNLB Antibody (Center) is for research use only and not for use in diagnostic or therapeutic procedures.

Protein Information

Name	RETNLB
Synonyms	CCRG, FIZZ2, HXCP2, RETNL2

Function	Probable hormone.
Cellular Location	Secreted.
Tissue Location	Expressed only in the gastrointestinal tract, particularly the colon

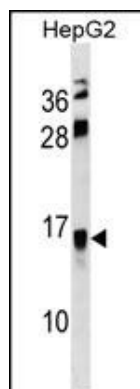
Background

RETNLB is probable hormone.

References

Zheng, L., et al. Virchows Arch. 456(1):53-63(2010)
 Angelini, D.J., et al. Am. J. Respir. Cell Mol. Biol. 41(5):553-561(2009)
 Zheng, L.D., et al. Dig. Dis. Sci. 54(2):274-281(2009)
 Renigunta, A., et al. FEBS Lett. 580(3):900-903(2006)
 Chumakov, A.M., et al. Oncogene 23(19):3414-3425(2004)

Images



RETNLB Antibody (Center) (Cat. #AP19178c) western blot analysis in HepG2 cell line lysates (35ug/lane). This demonstrates the RETNLB antibody detected the RETNLB protein (arrow).

Citations

- [Resistin-like molecule \$\beta\$ acts as a mitogenic factor in hypoxic pulmonary hypertension via the Ca²⁺-dependent PI3K/Akt/mTOR and PKC/MAPK signaling pathways](#)

Please note: All products are 'FOR RESEARCH USE ONLY. NOT FOR USE IN DIAGNOSTIC OR THERAPEUTIC PROCEDURES'.