

RN3L1 Antibody (C-term)

Affinity Purified Rabbit Polyclonal Antibody (Pab)

Catalog # AP19182b

Product Information

Application	WB, E
Primary Accession	A6NIE6
Reactivity	Human
Host	Rabbit
Clonality	Polyclonal
Isotype	Rabbit IgG
Clone Names	RB39662
Calculated MW	38035
Antigen Region	286-312

Additional Information

Other Names	Putative RRN3-like protein RRN3P2, RNA polymerase I transcription factor homolog pseudogene 2, RRN3P2
Target/Specificity	This RN3L1 antibody is generated from rabbits immunized with a KLH conjugated synthetic peptide between 286-312 amino acids from the C-terminal region of human RN3L1.
Dilution	WB~~1:1000 E~~Use at an assay dependent concentration.
Format	Purified polyclonal antibody supplied in PBS with 0.09% (W/V) sodium azide. This antibody is purified through a protein A column, followed by peptide affinity purification.
Storage	Maintain refrigerated at 2-8°C for up to 2 weeks. For long term storage store at -20°C in small aliquots to prevent freeze-thaw cycles.
Precautions	RN3L1 Antibody (C-term) is for research use only and not for use in diagnostic or therapeutic procedures.

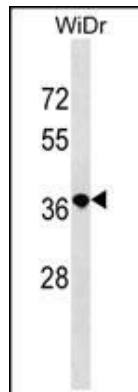
Protein Information

Name	RRN3P2
------	--------

Background

The function of this protein remains unknown.

Images



RN3L1 Antibody (C-term) (Cat. #AP19182b) western blot analysis in WiDr cell line lysates (35ug/lane). This demonstrates the RN3L1 antibody detected the RN3L1 protein (arrow).

Please note: All products are 'FOR RESEARCH USE ONLY. NOT FOR USE IN DIAGNOSTIC OR THERAPEUTIC PROCEDURES'.