

USE1 Antibody (N-term)

Affinity Purified Rabbit Polyclonal Antibody (Pab)

Catalog # AP19206a

Product Information

| | |
|-------------------|-----------------------------|
| Application | WB, E |
| Primary Accession | Q9NZ43 |
| Other Accession | NP_060937.1 |
| Reactivity | Human, Mouse |
| Host | Rabbit |
| Clonality | Polyclonal |
| Isotype | Rabbit IgG |
| Clone Names | RB39940 |
| Calculated MW | 29371 |
| Antigen Region | 9-35 |

Additional Information

| | |
|--------------------|--|
| Gene ID | 55850 |
| Other Names | Vesicle transport protein USE1, Putative MAPK-activating protein PM26, USE1-like protein, p31, USE1, USE1L |
| Target/Specificity | This USE1 antibody is generated from rabbits immunized with a KLH conjugated synthetic peptide between 9-35 amino acids from the N-terminal region of human USE1. |
| Dilution | WB~~1:1000 E~~Use at an assay dependent concentration. |
| Format | Purified polyclonal antibody supplied in PBS with 0.09% (W/V) sodium azide. This antibody is purified through a protein A column, followed by peptide affinity purification. |
| Storage | Maintain refrigerated at 2-8°C for up to 2 weeks. For long term storage store at -20°C in small aliquots to prevent freeze-thaw cycles. |
| Precautions | USE1 Antibody (N-term) is for research use only and not for use in diagnostic or therapeutic procedures. |

Protein Information

| | |
|----------|--|
| Name | USE1 |
| Synonyms | USE1L |
| Function | SNARE that may be involved in targeting and fusion of Golgi- derived |

retrograde transport vesicles with the ER.

Cellular Location

Endoplasmic reticulum membrane; Single-pass type IV membrane protein

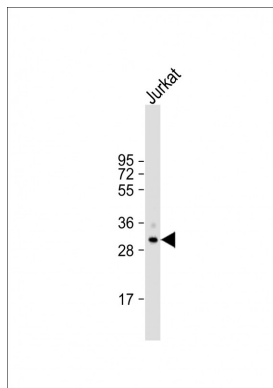
Background

SNARE that may be involved in targeting and fusion of Golgi-derived retrograde transport vesicles with the ER.

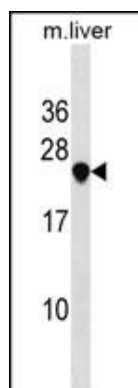
References

Aoki, T., et al. Mol. Biol. Cell 20(11):2639-2649(2009)
Okumura, A.J., et al. J. Biol. Chem. 281(7):4495-4506(2006)
Nakajima, K., et al. EMBO J. 23(16):3216-3226(2004)
Hirose, H., et al. EMBO J. 23(6):1267-1278(2004)
Matsuda, A., et al. Oncogene 22(21):3307-3318(2003)

Images



Anti-USE1 Antibody (N-term) at 1:2000 dilution + Jurkat whole cell lysate Lysates/proteins at 20 µg per lane. Secondary Goat Anti-Rabbit IgG, (H+L), Peroxidase conjugated at 1/10000 dilution. Predicted band size : 29 kDa Blocking/Dilution buffer: 5% NFDM/TBST.



USE1 Antibody (N-term) (Cat. #AP19206a) western blot analysis in mouse liver tissue lysates (35ug/lane). This demonstrates the USE1 antibody detected the USE1 protein (arrow).

Please note: All products are 'FOR RESEARCH USE ONLY. NOT FOR USE IN DIAGNOSTIC OR THERAPEUTIC PROCEDURES'.