

OR52I1 Antibody (C-term)

Affinity Purified Rabbit Polyclonal Antibody (Pab)

Catalog # AP19233b

Product Information

Application	WB, E
Primary Accession	Q8NGK6
Other Accession	NP_001005169.1
Reactivity	Human
Host	Rabbit
Clonality	Polyclonal
Isotype	Rabbit IgG
Clone Names	RB40205
Calculated MW	35386
Antigen Region	212-240

Additional Information

Gene ID	390037
Other Names	Olfactory receptor 52I1, Olfactory receptor OR11-13, OR52I1
Target/Specificity	This OR52I1 antibody is generated from rabbits immunized with a KLH conjugated synthetic peptide between 212-240 amino acids from the C-terminal region of human OR52I1.
Dilution	WB~~1:1000 E~~Use at an assay dependent concentration.
Format	Purified polyclonal antibody supplied in PBS with 0.09% (W/V) sodium azide. This antibody is purified through a protein A column, followed by peptide affinity purification.
Storage	Maintain refrigerated at 2-8°C for up to 2 weeks. For long term storage store at -20°C in small aliquots to prevent freeze-thaw cycles.
Precautions	OR52I1 Antibody (C-term) is for research use only and not for use in diagnostic or therapeutic procedures.

Protein Information

Name	OR52I1
Function	Odorant receptor.
Cellular Location	Cell membrane; Multi-pass membrane protein.

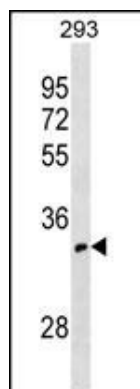
Background

Olfactory receptors interact with odorant molecules in the nose, to initiate a neuronal response that triggers the perception of a smell. The olfactory receptor proteins are members of a large family of G-protein-coupled receptors (GPCR) arising from single coding-exon genes. Olfactory receptors share a 7-transmembrane domain structure with many neurotransmitter and hormone receptors and are responsible for the recognition and G protein-mediated transduction of odorant signals. The olfactory receptor gene family is the largest in the genome. The nomenclature assigned to the olfactory receptor genes and proteins for this organism is independent of other organisms.

References

Malhotra, A., et al. Diabetes Metab. Res. Rev. 25(8):740-747(2009)
Malnic, B., et al. Proc. Natl. Acad. Sci. U.S.A. 101(8):2584-2589(2004)
Vanti, W.B., et al. Biochem. Biophys. Res. Commun. 305(1):67-71(2003)

Images



OR52I1 Antibody (C-term) (Cat. #AP19233b) western blot analysis in 293 cell line lysates (35ug/lane). This demonstrates the OR52I1 antibody detected the OR52I1 protein (arrow).

Please note: All products are 'FOR RESEARCH USE ONLY. NOT FOR USE IN DIAGNOSTIC OR THERAPEUTIC PROCEDURES'.