

# MGT4L Antibody (Center)

Affinity Purified Rabbit Polyclonal Antibody (Pab)

Catalog # AP19277c

## Product Information

---

Application	WB, E
Primary Accession	<a href="#">Q49AQ9</a>
Reactivity	Human
Host	Rabbit
Clonality	Polyclonal
Isotype	Rabbit IgG
Clone Names	RB38893
Antigen Region	56-82

## Additional Information

---

Other Names	Alpha-1, 3-mannosyl-glycoprotein 4-beta-N-acetylglucosaminyltransferase-like protein LOC641515
Target/Specificity	This MGT4L antibody is generated from rabbits immunized with a KLH conjugated synthetic peptide between 56-82 amino acids from the Central region of human MGT4L.
Dilution	WB~~1:1000 E~~Use at an assay dependent concentration.
Format	Purified polyclonal antibody supplied in PBS with 0.05% (V/V) Proclin 300. This antibody is purified through a protein A column, followed by peptide affinity purification.
Storage	Maintain refrigerated at 2-8°C for up to 2 weeks. For long term storage store at -20°C in small aliquots to prevent freeze-thaw cycles.
Precautions	MGT4L Antibody (Center) is for research use only and not for use in diagnostic or therapeutic procedures.

## Protein Information

---

### Background

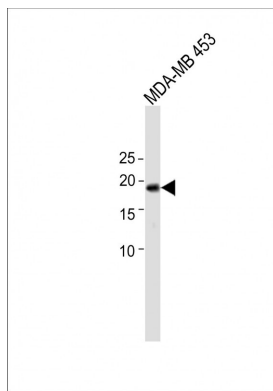
---

The function of this protein remains unknown.

### Images

---

All lanes: Anti-MGT4L Antibody (Center) at 1:1000 dilution



+ MDA-MB-453 whole cell lysate Lysates/proteins at 20 µg per lane. Secondary: Goat Anti-Rabbit IgG, (H+L), Peroxidase conjugated (ASP1615) at 1/15000 dilution. Observed band size: 18 KDa Blocking/Dilution buffer: 5% NFDM/TBST.

Please note: All products are 'FOR RESEARCH USE ONLY. NOT FOR USE IN DIAGNOSTIC OR THERAPEUTIC PROCEDURES'.