

PMF1 Antibody (Center)

Affinity Purified Rabbit Polyclonal Antibody (Pab)

Catalog # AP19290c

Product Information

Application	WB, E
Primary Accession	Q6P1K2
Other Accession	NP_009152.2
Reactivity	Human
Host	Rabbit
Clonality	Polyclonal
Isotype	Rabbit IgG
Clone Names	RB39624
Calculated MW	23339
Antigen Region	109-135

Additional Information

Gene ID	100527963;11243
Other Names	Polyamine-modulated factor 1, PMF-1, PMF1 {ECO:0000312 EMBL:AAH650311}
Target/Specificity	This PMF1 antibody is generated from rabbits immunized with a KLH conjugated synthetic peptide between 109-135 amino acids from the Central region of human PMF1.
Dilution	WB~~1:1000 E~~Use at an assay dependent concentration.
Format	Purified polyclonal antibody supplied in PBS with 0.09% (W/V) sodium azide. This antibody is purified through a protein A column, followed by peptide affinity purification.
Storage	Maintain refrigerated at 2-8°C for up to 2 weeks. For long term storage store at -20°C in small aliquots to prevent freeze-thaw cycles.
Precautions	PMF1 Antibody (Center) is for research use only and not for use in diagnostic or therapeutic procedures.

Protein Information

Name	PMF1 {ECO:0000312 EMBL:AAH65031.1}
Function	Part of the MIS12 complex which is required for normal chromosome alignment and segregation and kinetochore formation during mitosis. May act as a cotranscription partner of NFE2L2 involved in regulation of

polyamine-induced transcription of SSAT.

Cellular Location	Nucleus. Chromosome, centromere, kinetochore Note=Associated with the kinetochore
Tissue Location	Highest levels of expression in heart and skeletal muscle, with significant levels expressed in kidney and liver

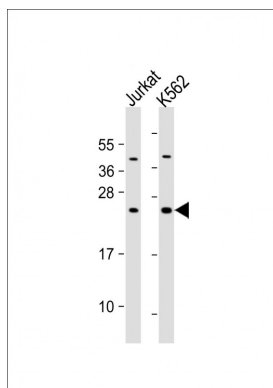
Background

Part of the MIS12 complex which is required for normal chromosome alignment and segregation and kinetochore formation during mitosis. May act as a cotranscription partner of NFE2L2 involved in regulation of polyamine-induced transcription of SSAT.

References

Aleman, A., et al. Clin. Cancer Res. 14(24):8236-8243(2008)
Kline, S.L., et al. J. Cell Biol. 173(1):9-17(2006)
Obuse, C., et al. Nat. Cell Biol. 6(11):1135-1141(2004)
Wang, Y., et al. Biochem. J. 366 (PT 1), 79-86 (2002) :
Wang, Y., et al. Biochem. J. 355 (PT 1), 45-49 (2001) :

Images



All lanes : Anti-PMF1 Antibody (Center) at 1:1000 dilution
Lane 1: Jurkat whole cell lysate Lane 2: K562 whole cell lysate
Lysates/proteins at 20 µg per lane. Secondary Goat Anti-Rabbit IgG, (H+L), Peroxidase conjugated at 1/10000 dilution. Predicted band size : 23 kDa
Blocking/Dilution buffer: 5% NFDM/TBST.

Please note: All products are 'FOR RESEARCH USE ONLY. NOT FOR USE IN DIAGNOSTIC OR THERAPEUTIC PROCEDURES'.