

# RNF223 Antibody (Center)

Affinity Purified Rabbit Polyclonal Antibody (Pab)

Catalog # AP19292C

## Product Information

---

Application	WB, E
Primary Accession	<a href="#">E7ERA6</a>
Other Accession	<a href="#">NP_001192181.1</a>
Reactivity	Human
Host	Rabbit
Clonality	Polyclonal
Isotype	Rabbit IgG
Clone Names	RB39665
Calculated MW	26629
Antigen Region	108-134

## Additional Information

---

Gene ID	401934
Other Names	RING finger protein 223, RNF223
Target/Specificity	This RNF223 antibody is generated from rabbits immunized with a KLH conjugated synthetic peptide between 108-134 amino acids from the Central region of human RNF223.
Dilution	WB~~1:1000 E~~Use at an assay dependent concentration.
Format	Purified polyclonal antibody supplied in PBS with 0.09% (W/V) sodium azide. This antibody is purified through a protein A column, followed by peptide affinity purification.
Storage	Maintain refrigerated at 2-8°C for up to 2 weeks. For long term storage store at -20°C in small aliquots to prevent freeze-thaw cycles.
Precautions	RNF223 Antibody (Center) is for research use only and not for use in diagnostic or therapeutic procedures.

## Protein Information

---

Name	RNF223
Cellular Location	Membrane; Single-pass membrane protein

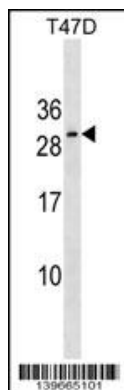
## Background

---

The function of this protein remains unknown.

## Images

---



RNF223 Antibody (Center)(Cat. #AP19292c) western blot analysis in T47D cell line lysates (35ug/lane). This demonstrates the RNF223 antibody detected the RNF223 protein (arrow).

Please note: All products are 'FOR RESEARCH USE ONLY. NOT FOR USE IN DIAGNOSTIC OR THERAPEUTIC PROCEDURES'.