

ZNF251 Antibody (N-term)

Affinity Purified Rabbit Polyclonal Antibody (Pab)

Catalog # AP19322a

Product Information

Application	WB, E
Primary Accession	Q9BRH9
Other Accession	NP_612376.1
Reactivity	Human
Host	Rabbit
Clonality	Polyclonal
Isotype	Rabbit IgG
Clone Names	RB40212
Calculated MW	75763
Antigen Region	154-182

Additional Information

Gene ID	90987
Other Names	Zinc finger protein 251, ZNF251
Target/Specificity	This ZNF251 antibody is generated from rabbits immunized with a KLH conjugated synthetic peptide between 154-182 amino acids from the N-terminal region of human ZNF251.
Dilution	WB~~1:1000 E~~Use at an assay dependent concentration.
Format	Purified polyclonal antibody supplied in PBS with 0.09% (W/V) sodium azide. This antibody is purified through a protein A column, followed by peptide affinity purification.
Storage	Maintain refrigerated at 2-8°C for up to 2 weeks. For long term storage store at -20°C in small aliquots to prevent freeze-thaw cycles.
Precautions	ZNF251 Antibody (N-term) is for research use only and not for use in diagnostic or therapeutic procedures.

Protein Information

Name	ZNF251
Function	May be involved in transcriptional regulation.
Cellular Location	Nucleus.

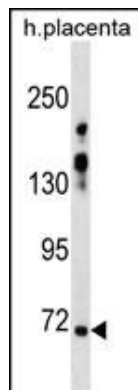
Background

ZNF251 may be involved in transcriptional regulation.

References

Rose, J. Phd, et al. Mol. Med. (2010) In press :

Images



ZNF251 Antibody (N-term)(Cat. #AP19322a) western blot analysis in human placenta tissue lysates (35ug/lane). This demonstrates the ZNF251 antibody detected the ZNF251 protein (arrow).

Please note: All products are 'FOR RESEARCH USE ONLY. NOT FOR USE IN DIAGNOSTIC OR THERAPEUTIC PROCEDURES'.