

# Mouse Crkl Antibody (C-term)

Affinity Purified Rabbit Polyclonal Antibody (Pab)

Catalog # AP19334b

## Product Information

---

<b>Application</b>	WB, E
<b>Primary Accession</b>	<a href="#">P47941</a>
<b>Other Accession</b>	<a href="#">Q5U2U2</a> , <a href="#">NP_031790.2</a>
<b>Reactivity</b>	Mouse
<b>Predicted</b>	Rat
<b>Host</b>	Rabbit
<b>Clonality</b>	Polyclonal
<b>Isotype</b>	Rabbit IgG
<b>Clone Names</b>	RB40265
<b>Calculated MW</b>	33830
<b>Antigen Region</b>	275-303

## Additional Information

---

<b>Gene ID</b>	12929
<b>Other Names</b>	Crk-like protein, Crkl, Crkol
<b>Target/Specificity</b>	This Mouse Crkl antibody is generated from rabbits immunized with a KLH conjugated synthetic peptide between 275-303 amino acids from the C-terminal region of mouse Crkl.
<b>Dilution</b>	WB~~1:1000 E~~Use at an assay dependent concentration.
<b>Format</b>	Purified polyclonal antibody supplied in PBS with 0.09% (W/V) sodium azide. This antibody is purified through a protein A column, followed by peptide affinity purification.
<b>Storage</b>	Maintain refrigerated at 2-8°C for up to 2 weeks. For long term storage store at -20°C in small aliquots to prevent freeze-thaw cycles.
<b>Precautions</b>	Mouse Crkl Antibody (C-term) is for research use only and not for use in diagnostic or therapeutic procedures.

## Protein Information

---

<b>Name</b>	Crkl
<b>Synonyms</b>	Crkol
<b>Function</b>	May mediate the transduction of intracellular signals.

## Background

---

Crkl may mediate the transduction of intracellular signals.

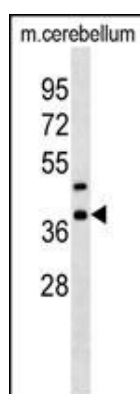
## References

---

Hallock, P.T., et al. Genes Dev. 24(21):2451-2461(2010)  
Seo, J.H., et al. Cancer Res. 70(18):7325-7335(2010)  
Vallejo-Illarramendi, A., et al. J. Clin. Invest. 119(8):2218-2230(2009)  
Seo, J.H., et al. Mol. Cell. Biol. 29(11):3076-3087(2009)  
Johnson, K.J., et al. PLoS ONE 4 (10), E7439 (2009) :

## Images

---



Mouse Crkl Antibody (C-term)(Cat. #AP19334b) western blot analysis in mouse cerebellum tissue lysates (35ug/lane). This demonstrates the Crkl antibody detected the Crkl protein (arrow).

Please note: All products are 'FOR RESEARCH USE ONLY. NOT FOR USE IN DIAGNOSTIC OR THERAPEUTIC PROCEDURES'.