

Mouse St18 Antibody(N-term)

Affinity Purified Rabbit Polyclonal Antibody (Pab)

Catalog # AP19382A

Product Information

Application	WB, E
Primary Accession	Q80TY4
Other Accession	NP_776293.1
Reactivity	Mouse
Host	Rabbit
Clonality	Polyclonal
Isotype	Rabbit IgG
Clone Names	RB40001
Calculated MW	114750
Antigen Region	195-222

Additional Information

Gene ID	240690
Other Names	Suppression of tumorigenicity 18 protein, St18, Kiaa0535
Target/Specificity	This Mouse St18 antibody is generated from rabbits immunized with a KLH conjugated synthetic peptide between 195-222 amino acids from the N-terminal region of mouse St18.
Dilution	WB~~1:1000 E~~Use at an assay dependent concentration.
Format	Purified polyclonal antibody supplied in PBS with 0.09% (W/V) sodium azide. This antibody is purified through a protein A column, followed by peptide affinity purification.
Storage	Maintain refrigerated at 2-8°C for up to 2 weeks. For long term storage store at -20°C in small aliquots to prevent freeze-thaw cycles.
Precautions	Mouse St18 Antibody(N-term) is for research use only and not for use in diagnostic or therapeutic procedures.

Protein Information

Name	St18
Synonyms	Kiaa0535
Function	Repressor that binds to DNA sequences containing a bipartite element consisting of a direct repeat of the sequence 5'-AAAGTTT-3' separated by 2-9

nucleotides. Represses basal transcription activity from target promoters (By similarity).

Cellular Location

Nucleus.

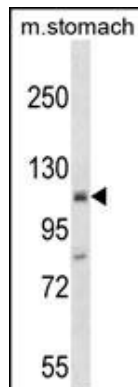
Background

St18 is a pepressor that binds to DNA sequences containing a bipartite element consisting of a direct repeat of the sequence 5'-AAAGTTT-3' separated by 2-9 nucleotides. Represses basal transcription activity from target promoters (By similarity).

References

Hoffman, B.G., et al. Genome Biol. 9 (6), R99 (2008) :
Wang, S., et al. Mech. Dev. 124 (11-12), 898-910 (2007) :
Xu, Y., et al. Dev. Biol. 297(2):340-349(2006)
Okazaki, N., et al. DNA Res. 10(1):35-48(2003)

Images



Mouse St18 Antibody (N-term)(Cat. #AP19382a) western blot analysis in mouse stomach tissue lysates (35ug/lane). This demonstrates the Mouse St18 antibody detected the Mouse St18 protein (arrow).

Please note: All products are 'FOR RESEARCH USE ONLY. NOT FOR USE IN DIAGNOSTIC OR THERAPEUTIC PROCEDURES'.