

# Mouse Tmem158 Antibody(Center)

Affinity Purified Rabbit Polyclonal Antibody (Pab)

Catalog # AP19388c

## Product Information

---

<b>Application</b>	WB, E
<b>Primary Accession</b>	<a href="#">Q6F5E0</a>
<b>Other Accession</b>	<a href="#">Q91XV7</a> , <a href="#">Q8WZ71</a> , <a href="#">A2VDX9</a>
<b>Reactivity</b>	Mouse
<b>Predicted</b>	Bovine, Human, Rat
<b>Host</b>	Rabbit
<b>Clonality</b>	Polyclonal
<b>Isotype</b>	Rabbit IgG
<b>Clone Names</b>	RB40261
<b>Calculated MW</b>	29145
<b>Antigen Region</b>	179-206

## Additional Information

---

<b>Other Names</b>	Transmembrane protein 158, 40 kDa BINP-binding protein, p40BBP, Ras-induced senescence protein 1, Tmem158, Mbbp, Ris1
<b>Target/Specificity</b>	This Mouse Tmem158 antibody is generated from rabbits immunized with a KLH conjugated synthetic peptide between 179-206 amino acids from the Central region of mouse Tmem158.
<b>Dilution</b>	WB~~1:1000 E~~Use at an assay dependent concentration.
<b>Format</b>	Purified polyclonal antibody supplied in PBS with 0.09% (W/V) sodium azide. This antibody is purified through a protein A column, followed by peptide affinity purification.
<b>Storage</b>	Maintain refrigerated at 2-8°C for up to 2 weeks. For long term storage store at -20°C in small aliquots to prevent freeze-thaw cycles.
<b>Precautions</b>	Mouse Tmem158 Antibody(Center) is for research use only and not for use in diagnostic or therapeutic procedures.

## Protein Information

---

<b>Name</b>	Tmem158
<b>Synonyms</b>	Mbbp, Ris1
<b>Function</b>	Receptor for brain injury-derived neurotrophic peptide (BINP), a synthetic 13-mer peptide.

**Cellular Location**

Membrane; Multi-pass membrane protein

**Tissue Location**

Ubiquitously expressed. Brain is the major site of expression.

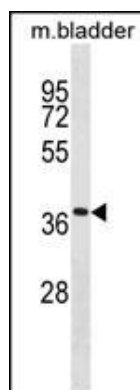
**Background**

---

Receptor for brain injury-derived neurotrophic peptide (BINP), a synthetic 13-mer peptide (By similarity).

**Images**

---



Mouse Tmem158 Antibody (Center)(Cat. #AP19388c)  
western blot analysis in mouse bladder tissue lysates  
(35ug/lane).This demonstrates the Mouse Tmem158  
antibody detected the Mouse Tmem158 protein (arrow).

Please note: All products are 'FOR RESEARCH USE ONLY. NOT FOR USE IN DIAGNOSTIC OR THERAPEUTIC PROCEDURES'.