

COL10A1 Antibody(N-term)

Affinity Purified Rabbit Polyclonal Antibody (Pab)

Catalog # AP19393a

Product Information

Application	WB, E
Primary Accession	Q03692
Other Accession	NP_000484.2
Reactivity	Human
Host	Rabbit
Clonality	Polyclonal
Isotype	Rabbit IgG
Clone Names	RB40406
Calculated MW	66158
Antigen Region	29-58

Additional Information

Gene ID	1300
Other Names	Collagen alpha-1(X) chain, COL10A1
Target/Specificity	This COL10A1 antibody is generated from rabbits immunized with a KLH conjugated synthetic peptide between 29-58 amino acids from the N-terminal region of human COL10A1.
Dilution	WB~~1:1000 E~~Use at an assay dependent concentration.
Format	Purified polyclonal antibody supplied in PBS with 0.05% (V/V) Proclin 300. This antibody is purified through a protein A column, followed by peptide affinity purification.
Storage	Maintain refrigerated at 2-8°C for up to 2 weeks. For long term storage store at -20°C in small aliquots to prevent freeze-thaw cycles.
Precautions	COL10A1 Antibody(N-term) is for research use only and not for use in diagnostic or therapeutic procedures.

Protein Information

Name	COL10A1
Function	Type X collagen is a product of hypertrophic chondrocytes and has been localized to presumptive mineralization zones of hyaline cartilage.
Cellular Location	Secreted, extracellular space, extracellular matrix

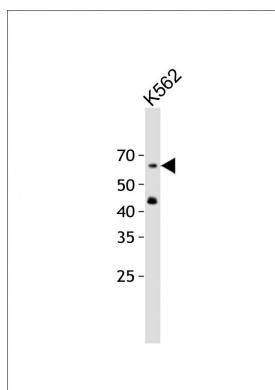
Background

This gene encodes the alpha chain of type X collagen, a short chain collagen expressed by hypertrophic chondrocytes during endochondral ossification. Unlike type VIII collagen, the other short chain collagen, type X collagen is a homotrimer. Mutations in this gene are associated with Schmid type metaphyseal chondrodysplasia (SMCD) and Japanese type spondylometaphyseal dysplasia (SMD).

References

Makitie, O., et al. J. Orthop. Res. 28(11):1497-1501(2010)
Wang, S., et al. Connect. Tissue Res. 51(3):188-196(2010)
Videman, T., et al. Arthritis Rheum. 60(2):470-481(2009)
Higashikawa, A., et al. Arthritis Rheum. 60(1):166-178(2009)
Zimmermann, P., et al. Arthritis Rheum. 58(9):2743-2753(2008)

Images



All lanes: Anti-COL10A1 Antibody(N-term) at 1:2000 dilution + K562 whole cell lysate Lysates/proteins at 20 µg per lane. Secondary: Goat Anti-Rabbit IgG, (H+L), Peroxidase conjugated (ASP1615) at 1/15000 dilution. Observed band size: 62 KDa Blocking/Dilution buffer: 5% NFDM/TBST.

Please note: All products are 'FOR RESEARCH USE ONLY. NOT FOR USE IN DIAGNOSTIC OR THERAPEUTIC PROCEDURES'.