

MRPL24 Antibody (C-term)

Purified Rabbit Polyclonal Antibody (Pab)

Catalog # AP1940b

Product Information

Application	WB, E
Primary Accession	Q96A35
Reactivity	Human, Mouse
Host	Rabbit
Clonality	Polyclonal
Isotype	Rabbit IgG
Clone Names	RB9670
Calculated MW	24915
Antigen Region	185-214

Additional Information

Gene ID	79590
Other Names	39S ribosomal protein L24, mitochondrial, L24mt, MRP-L24, MRPL24
Target/Specificity	This MRPL24 antibody is generated from rabbits immunized with a KLH conjugated synthetic peptide between 185-214 amino acids from the C-terminal region of human MRPL24.
Dilution	WB~~1:1000 E~~Use at an assay dependent concentration.
Format	Purified polyclonal antibody supplied in PBS with 0.09% (W/V) sodium azide. This antibody is prepared by Saturated Ammonium Sulfate (SAS) precipitation followed by dialysis against PBS.
Storage	Maintain refrigerated at 2-8°C for up to 2 weeks. For long term storage store at -20°C in small aliquots to prevent freeze-thaw cycles.
Precautions	MRPL24 Antibody (C-term) is for research use only and not for use in diagnostic or therapeutic procedures.

Protein Information

Name	MRPL24
Cellular Location	Mitochondrion

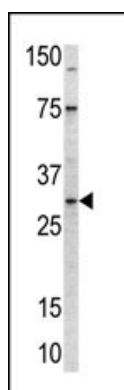
Background

Mammalian mitochondrial ribosomal proteins are encoded by nuclear genes and help in protein synthesis within the mitochondrion. Mitochondrial ribosomes (mitoribosomes) consist of a small 28S subunit and a large 39S subunit. They have an estimated 75% protein to rRNA composition compared to prokaryotic ribosomes, where this ratio is reversed. Another difference between mammalian mitoribosomes and prokaryotic ribosomes is that the latter contain a 5S rRNA. Among different species, the proteins comprising the mitoribosome differ greatly in sequence, and sometimes in biochemical properties, which prevents easy recognition by sequence homology. MRPL24 is a 39S subunit protein which is more than twice the size of its E.coli counterpart (EcoL24).

References

Zhang, Z., et al., Genomics 81(5):468-480 (2003).
O'Brien, T.W., et al., J. Biol. Chem. 275(24):18153-18159 (2000).
Kenmochi, N., et al., Genomics 77 (1-2), 65-70 (2001).

Images



Western blot analysis of anti-MRPL24 Pab (Cat. #AP1940b) in mouse kidney tissue lysate (35ug/lane). MRPL24 (arrow) was detected using the purified Pab.

Please note: All products are 'FOR RESEARCH USE ONLY. NOT FOR USE IN DIAGNOSTIC OR THERAPEUTIC PROCEDURES'.