

## CCDC6 Antibody(N-term)

Affinity Purified Rabbit Polyclonal Antibody (Pab)

Catalog # AP19417a

### Product Information

---

<b>Application</b>	WB, E
<b>Primary Accession</b>	<a href="#">Q16204</a>
<b>Other Accession</b>	<a href="#">D3YZP9</a> , <a href="#">NP_005427.2</a>
<b>Reactivity</b>	Human, Mouse
<b>Predicted</b>	Mouse
<b>Host</b>	Rabbit
<b>Clonality</b>	Polyclonal
<b>Isotype</b>	Rabbit IgG
<b>Clone Names</b>	RB40538
<b>Calculated MW</b>	53291
<b>Antigen Region</b>	54-82

### Additional Information

---

<b>Gene ID</b>	8030
<b>Other Names</b>	Coiled-coil domain-containing protein 6, Papillary thyroid carcinoma-encoded protein, Protein H4, CCDC6, D10S170, TST1
<b>Target/Specificity</b>	This CCDC6 antibody is generated from rabbits immunized with a KLH conjugated synthetic peptide between 54-82 amino acids from the N-terminal region of human CCDC6.
<b>Dilution</b>	WB~~1:1000 E~~Use at an assay dependent concentration.
<b>Format</b>	Purified polyclonal antibody supplied in PBS with 0.09% (W/V) sodium azide. This antibody is purified through a protein A column, followed by peptide affinity purification.
<b>Storage</b>	Maintain refrigerated at 2-8°C for up to 2 weeks. For long term storage store at -20°C in small aliquots to prevent freeze-thaw cycles.
<b>Precautions</b>	CCDC6 Antibody(N-term) is for research use only and not for use in diagnostic or therapeutic procedures.

### Protein Information

---

<b>Name</b>	CCDC6
<b>Synonyms</b>	D10S170, TST1

<b>Cellular Location</b>	Cytoplasm. Cytoplasm, cytoskeleton. Note=May be a cytoskeletal protein
<b>Tissue Location</b>	Ubiquitously expressed.

## Background

---

This gene encodes a coiled-coil domain-containing protein. The encoded protein is ubiquitously expressed and may function as a tumor suppressor. A chromosomal rearrangement resulting in the expression of a fusion gene containing a portion of this gene and the intracellular kinase-encoding domain of the ret proto-oncogene is the cause of thyroid papillary carcinoma.

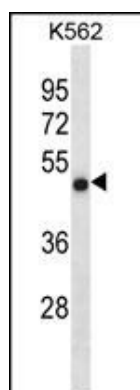
## References

---

Leone, V., et al. *Oncogene* 29(30):4341-4351(2010)  
Richardson, D.S., et al. *Cancer Res.* 69(11):4861-4869(2009)  
Jazdzewski, K., et al. *Proc. Natl. Acad. Sci. U.S.A.* 105(20):7269-7274(2008)  
Sugiyama, N., et al. *Mol. Cell Proteomics* 6(6):1103-1109(2007)  
Olsen, J.V., et al. *Cell* 127(3):635-648(2006)

## Images

---



CCDC6 Antibody (N-term)(Cat. #AP19417a) western blot analysis in K562 cell line lysates (35ug/lane). This demonstrates the CCDC6 antibody detected the CCDC6 protein (arrow).

Please note: All products are 'FOR RESEARCH USE ONLY. NOT FOR USE IN DIAGNOSTIC OR THERAPEUTIC PROCEDURES'.