

PRRX1 Antibody(C-term)

Affinity Purified Rabbit Polyclonal Antibody (Pab)

Catalog # AP19418b

Product Information

Application	WB, E
Primary Accession	P54821
Other Accession	P63014 , P63013 , Q05437 , NP_073207.1
Reactivity	Human
Predicted	Chicken, Mouse, Rat
Host	Rabbit
Clonality	Polyclonal
Isotype	Rabbit IgG
Clone Names	RB40539
Calculated MW	27296
Antigen Region	213-242

Additional Information

Gene ID	5396
Other Names	Paired mesoderm homeobox protein 1, Homeobox protein PHOX1, Paired-related homeobox protein 1, PRX-1, PRRX1, PMX1
Target/Specificity	This PRRX1 antibody is generated from rabbits immunized with a KLH conjugated synthetic peptide between 213-242 amino acids from the C-terminal region of human PRRX1.
Dilution	WB~~1:1000 E~~Use at an assay dependent concentration.
Format	Purified polyclonal antibody supplied in PBS with 0.09% (W/V) sodium azide. This antibody is purified through a protein A column, followed by peptide affinity purification.
Storage	Maintain refrigerated at 2-8°C for up to 2 weeks. For long term storage store at -20°C in small aliquots to prevent freeze-thaw cycles.
Precautions	PRRX1 Antibody(C-term) is for research use only and not for use in diagnostic or therapeutic procedures.

Protein Information

Name	PRRX1
Synonyms	PMX1

Function	Master transcription factor of stromal fibroblasts for myofibroblastic lineage progression. Orchestrates the functional drift of fibroblasts into myofibroblastic phenotype via TGF-beta signaling by remodeling a super-enhancer landscape. Through this function, plays an essential role in wound healing process (PubMed: 35589735). Acts as a transcriptional regulator of muscle creatine kinase (MCK) and so has a role in the establishment of diverse mesodermal muscle types. The protein binds to an A/T-rich element in the muscle creatine enhancer (By similarity). May play a role in homeostasis and regeneration of bone, white adipose tissue and derm (By similarity).
Cellular Location	Nucleus {ECO:0000250 UniProtKB:P63013}.
Tissue Location	[Isoform 1]: Widely expressed in embryonic and adult tissues, with highest levels in skeletal muscle. Isoform 1 is either expressed at similar or higher levels compared to isoform 2 in all embryonic tissues but skeletal muscle and heart. In adult tissues, expressed at lower levels compared to isoform 2

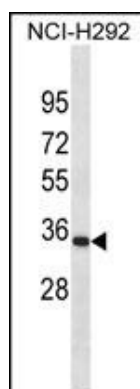
Background

The DNA-associated protein encoded by this gene is a member of the paired family of homeobox proteins localized to the nucleus. The protein functions as a transcription co-activator, enhancing the DNA-binding activity of serum response factor, a protein required for the induction of genes by growth and differentiation factors. The protein regulates muscle creatine kinase, indicating a role in the establishment of diverse mesodermal muscle types. Alternative splicing yields two isoforms that differ in abundance and expression patterns. [provided by RefSeq].

References

Jugessur, A., et al. PLoS ONE 5 (7), E11493 (2010) :
Hirose, K., et al. Oncogene 27(46):6056-6067(2008)
Vieira, A.R., et al. Genet. Med. 10(9):668-674(2008)
Jiang, F., et al. Exp. Biol. Med. (Maywood) 233(3):286-296(2008)
Kim, Y.J., et al. Cancer Res. 67(2):546-554(2007)

Images



PRRX1 Antibody (C-term)(Cat. #AP19418b) western blot analysis in NCI-H292 cell line lysates (35ug/lane). This demonstrates the PRRX1 antibody detected the PRRX1 protein (arrow).

Please note: All products are 'FOR RESEARCH USE ONLY. NOT FOR USE IN DIAGNOSTIC OR THERAPEUTIC PROCEDURES'.