

# DHODH Antibody(Center)

Affinity Purified Rabbit Polyclonal Antibody (Pab)

Catalog # AP19419c

## Product Information

---

<b>Application</b>	WB, E
<b>Primary Accession</b>	<a href="#">Q02127</a>
<b>Other Accession</b>	<a href="#">NP_001352.2</a>
<b>Reactivity</b>	Human
<b>Host</b>	Rabbit
<b>Clonality</b>	Polyclonal
<b>Isotype</b>	Rabbit IgG
<b>Clone Names</b>	RB40540
<b>Calculated MW</b>	42867
<b>Antigen Region</b>	166-194

## Additional Information

---

<b>Gene ID</b>	1723
<b>Other Names</b>	Dihydroorotate dehydrogenase (quinone), mitochondrial, DHodehase, Dihydroorotate oxidase, DHODH
<b>Target/Specificity</b>	This DHODH antibody is generated from rabbits immunized with a KLH conjugated synthetic peptide between 166-194 amino acids from the Central region of human DHODH.
<b>Dilution</b>	WB~~1:1000 E~~Use at an assay dependent concentration.
<b>Format</b>	Purified polyclonal antibody supplied in PBS with 0.09% (W/V) sodium azide. This antibody is purified through a protein A column, followed by peptide affinity purification.
<b>Storage</b>	Maintain refrigerated at 2-8°C for up to 2 weeks. For long term storage store at -20°C in small aliquots to prevent freeze-thaw cycles.
<b>Precautions</b>	DHODH Antibody(Center) is for research use only and not for use in diagnostic or therapeutic procedures.

## Protein Information

---

<b>Name</b>	DHODH
<b>Function</b>	Catalyzes the conversion of dihydroorotate to orotate with quinone as electron acceptor. Required for UMP biosynthesis via de novo pathway.

## Background

---

The protein encoded by this gene catalyzes the fourth enzymatic step, the ubiquinone-mediated oxidation of dihydroorotate to orotate, in de novo pyrimidine biosynthesis. This protein is a mitochondrial protein located on the outer surface of the inner mitochondrial membrane.

## References

---

Hail, N. Jr., et al. Free Radic. Biol. Med. 49(1):109-116(2010)

Ng, S.B., et al. Nat. Genet. 42(1):30-35(2010)

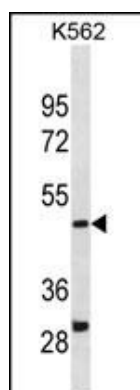
Grabar, P.B., et al. Ann. Rheum. Dis. 68(8):1367-1368(2009)

Pawlik, A., et al. Pharmacogenomics 10(2):303-309(2009)

Anney, R.J., et al. Am. J. Med. Genet. B Neuropsychiatr. Genet. 147B (8), 1369-1378 (2008) :

## Images

---



DHODH Antibody (Center)(Cat. #AP19419c) western blot analysis in K562 cell line lysates (35ug/lane). This demonstrates the DHODH antibody detected the DHODH protein (arrow).

Please note: All products are 'FOR RESEARCH USE ONLY. NOT FOR USE IN DIAGNOSTIC OR THERAPEUTIC PROCEDURES'.