

STX11 Antibody(N-term)

Affinity Purified Rabbit Polyclonal Antibody (Pab)

Catalog # AP19427a

Product Information

Application	WB, E
Primary Accession	O75558
Other Accession	NP_003755.2
Reactivity	Human
Host	Rabbit
Clonality	Polyclonal
Isotype	Rabbit IgG
Clone Names	RB40556
Calculated MW	33196
Antigen Region	29-56

Additional Information

Gene ID	8676
Other Names	Syntaxin-11, STX11
Target/Specificity	This STX11 antibody is generated from rabbits immunized with a KLH conjugated synthetic peptide between 29-56 amino acids from the N-terminal region of human STX11.
Dilution	WB~~1:1000 E~~Use at an assay dependent concentration.
Format	Purified polyclonal antibody supplied in PBS with 0.09% (W/V) sodium azide. This antibody is purified through a protein A column, followed by peptide affinity purification.
Storage	Maintain refrigerated at 2-8°C for up to 2 weeks. For long term storage store at -20°C in small aliquots to prevent freeze-thaw cycles.
Precautions	STX11 Antibody(N-term) is for research use only and not for use in diagnostic or therapeutic procedures.

Protein Information

Name	STX11
Function	SNARE that acts to regulate protein transport between late endosomes and the trans-Golgi network.
Cellular Location	Membrane; Peripheral membrane protein. Golgi apparatus, trans-Golgi

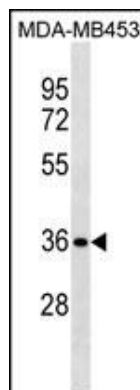
Background

This gene encodes a member of the syntaxin family. Syntaxins have been implicated in the targeting and fusion of intracellular transport vesicles. This family member may regulate protein transport among late endosomes and the trans-Golgi network. Mutations in this gene have been associated with familial hemophagocytic lymphohistiocytosis.

References

Marsh, R.A., et al. *Pediatr Blood Cancer* 55(1):134-140(2010)
Rose, J.E., et al. *Mol. Med.* 16 (7-8), 247-253 (2010) :
Danielian, S., et al. *J. Clin. Immunol.* 30(2):330-337(2010)
zur Stadt, U., et al. *Am. J. Hum. Genet.* 85(4):482-492(2009)
Marcelin, G., et al. *Mamm. Genome* 20(3):131-139(2009)

Images



STX11 Antibody (N-term)(Cat. #AP19427a) western blot analysis in MDA-MB453 cell line lysates (35ug/lane). This demonstrates the STX11 antibody detected the STX11 protein (arrow).

Please note: All products are 'FOR RESEARCH USE ONLY. NOT FOR USE IN DIAGNOSTIC OR THERAPEUTIC PROCEDURES'.