

PDCD2L Antibody(Center)

Affinity Purified Rabbit Polyclonal Antibody (Pab)

Catalog # AP19454c

Product Information

Application	WB, E
Primary Accession	Q9BRP1
Other Accession	NP_115722.1
Reactivity	Human
Host	Rabbit
Clonality	Polyclonal
Isotype	Rabbit IgG
Clone Names	RB40467
Calculated MW	39417
Antigen Region	180-208

Additional Information

Gene ID	84306
Other Names	Programmed cell death protein 2-like, PDCD2L
Target/Specificity	This PDCD2L antibody is generated from rabbits immunized with a KLH conjugated synthetic peptide between 180-208 amino acids from the Central region of human PDCD2L.
Dilution	WB~~1:1000 E~~Use at an assay dependent concentration.
Format	Purified polyclonal antibody supplied in PBS with 0.09% (W/V) sodium azide. This antibody is purified through a protein A column, followed by peptide affinity purification.
Storage	Maintain refrigerated at 2-8°C for up to 2 weeks. For long term storage store at -20°C in small aliquots to prevent freeze-thaw cycles.
Precautions	PDCD2L Antibody(Center) is for research use only and not for use in diagnostic or therapeutic procedures.

Protein Information

Name	PDCD2L
Function	Over-expression suppresses AP1, CREB, NFAT, and NF-kB transcriptional activation, and delays cell cycle progression at S phase.
Tissue Location	Higher expression in lung, colon, mammary gland, cervix, stomach and small

intestine.

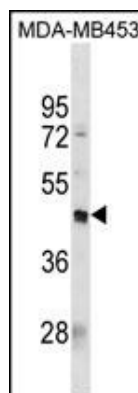
Background

MGC13096, also known as PDCD2L, might play a role in apoptosis given evidence that over expression attenuates TNF alpha release in Daudi cells and restrained proliferation of HEK293T cells.

References

Chen, Q., et al. Hum. Immunol. 69 (4-5), 259-265 (2008) :
Chen, Q., et al. Cell Biochem. Funct. 26(2):141-145(2008)
Lamesch, P., et al. Genomics 89(3):307-315(2007)
Chen, Q., et al. Mol. Cell. Biochem. 280 (1-2), 185-191 (2005) :

Images



PDCD2L Antibody (Center) (Cat. #AP19454c) western blot analysis in MDA-MB453 cell line lysates (35ug/lane). This demonstrates the PDCD2L antibody detected the PDCD2L protein (arrow).

Please note: All products are 'FOR RESEARCH USE ONLY. NOT FOR USE IN DIAGNOSTIC OR THERAPEUTIC PROCEDURES'.