

# LGI3 Antibody(Center)

Affinity Purified Rabbit Polyclonal Antibody (Pab)

Catalog # AP19469c

## Product Information

---

<b>Application</b>	WB, E
<b>Primary Accession</b>	<a href="#">Q8N145</a>
<b>Other Accession</b>	<a href="#">Q8K406</a> , <a href="#">Q4R4H3</a> , <a href="#">NP_644807.1</a>
<b>Reactivity</b>	Human
<b>Predicted</b>	Monkey, Mouse
<b>Host</b>	Rabbit
<b>Clonality</b>	Polyclonal
<b>Isotype</b>	Rabbit IgG
<b>Clone Names</b>	RB40597
<b>Calculated MW</b>	61704
<b>Antigen Region</b>	310-338

## Additional Information

---

<b>Gene ID</b>	203190
<b>Other Names</b>	Leucine-rich repeat LGI family member 3, LGI1-like protein 4, Leucine-rich glioma-inactivated protein 3, LGI3, LGIL4
<b>Target/Specificity</b>	This LGI3 antibody is generated from rabbits immunized with a KLH conjugated synthetic peptide between 310-338 amino acids from the Central region of human LGI3.
<b>Dilution</b>	WB~~1:1000 E~~Use at an assay dependent concentration.
<b>Format</b>	Purified polyclonal antibody supplied in PBS with 0.09% (W/V) sodium azide. This antibody is purified through a protein A column, followed by peptide affinity purification.
<b>Storage</b>	Maintain refrigerated at 2-8°C for up to 2 weeks. For long term storage store at -20°C in small aliquots to prevent freeze-thaw cycles.
<b>Precautions</b>	LGI3 Antibody(Center) is for research use only and not for use in diagnostic or therapeutic procedures.

## Protein Information

---

<b>Name</b>	LGI3
<b>Synonyms</b>	LGIL4

<b>Function</b>	May participate in the regulation of neuronal exocytosis.
<b>Cellular Location</b>	Secreted. Cytoplasmic vesicle, secretory vesicle, synaptic vesicle {ECO:0000250 UniProtKB:Q8K406}. Synapse, synaptosome {ECO:0000250 UniProtKB:Q8K406}. Cell projection, axon {ECO:0000250 UniProtKB:Q8K406}. Note=Found in the synaptosomal membrane fraction. Within peripheral myelinated axons, LGI3 is highly expressed at the juxtaparanodal membrane and colocalizes with the voltage-gated potassium channels Kv1.1 (KCNA1) and Kv1.2 (KCNA2), and with CNTNAP2, DLG4, ADAM22 and ADAM23 (By similarity) {ECO:0000250 UniProtKB:Q8K406}
<b>Tissue Location</b>	Widely expressed, with highest levels in brain and lung.

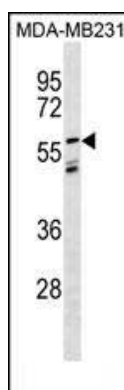
## Background

LGI3 may participate in the regulation of neuronal exocytosis (By similarity).

## References

Okabayashi, S., et al. Neuroreport 19(12):1175-1179(2008)  
 Clark, H.F., et al. Genome Res. 13(10):2265-2270(2003)  
 Staub, E., et al. Trends Biochem. Sci. 27(9):441-444(2002)  
 Scheel, H., et al. Hum. Mol. Genet. 11(15):1757-1762(2002)  
 Gu, W., et al. FEBS Lett. 519 (1-3), 71-76 (2002) :

## Images



LGI3 Antibody (Center) (Cat. #AP19469c) western blot analysis in MDA-MB231 cell line lysates (35ug/lane). This demonstrates the LGI3 antibody detected the LGI3 protein (arrow).

Please note: All products are 'FOR RESEARCH USE ONLY. NOT FOR USE IN DIAGNOSTIC OR THERAPEUTIC PROCEDURES'.