

TFEC Antibody(Center)

Affinity Purified Rabbit Polyclonal Antibody (Pab)

Catalog # AP19475c

Product Information

Application	WB, E
Primary Accession	O14948
Other Accession	Q63302 , Q9WTW4 , Q5XFQ6 , NP_001018068.1
Reactivity	Human, Mouse
Predicted	Chicken, Mouse, Rat
Host	Rabbit
Clonality	Polyclonal
Isotype	Rabbit IgG
Clone Names	RB40605
Calculated MW	38788
Antigen Region	179-205

Additional Information

Gene ID	22797
Other Names	Transcription factor EC, TFE-C, Class E basic helix-loop-helix protein 34, bHLHe34, Transcription factor EC-like, hTFEC-L, TFEC, BHLHE34, TC FEC, TFECL
Target/Specificity	This TFEC antibody is generated from rabbits immunized with a KLH conjugated synthetic peptide between 179-205 amino acids from the Central region of human TFEC.
Dilution	WB~~1:1000 E~~Use at an assay dependent concentration.
Format	Purified polyclonal antibody supplied in PBS with 0.09% (W/V) sodium azide. This antibody is purified through a protein A column, followed by peptide affinity purification.
Storage	Maintain refrigerated at 2-8°C for up to 2 weeks. For long term storage store at -20°C in small aliquots to prevent freeze-thaw cycles.
Precautions	TFEC Antibody(Center) is for research use only and not for use in diagnostic or therapeutic procedures.

Protein Information

Name	TFEC
Synonyms	BHLHE34, TC FEC, TFECL

Function	Transcriptional regulator that acts as a repressor or an activator. Acts as a transcriptional repressor on minimal promoter containing element F (that includes an E-box sequence). Binds to element F in an E-box sequence-specific manner. Acts as a transcriptional transactivator on the proximal promoter region of the tartrate-resistant acid phosphatase (TRAP) E-box containing promoter (By similarity). Collaborates with MITF in target gene activation (By similarity). Acts as a transcriptional repressor on minimal promoter containing mu E3 enhancer sequence (By similarity). Binds to mu E3 DNA sequence of the immunoglobulin heavy-chain gene enhancer (By similarity). Binds DNA in a homo- or heterodimeric form.
Cellular Location	Nucleus {ECO:0000255 PROSITE-ProRule:PRU00981, ECO:0000269 PubMed:11467950}
Tissue Location	Expressed moderately in spleen, kidney, bone marrow, small intestine and leukocytes. Expressed weakly in testis, trachea and colon.

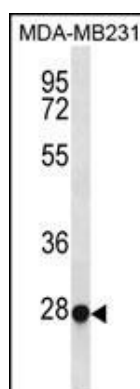
Background

Transcriptional regulator that acts as a repressor or an activator. Acts as a transcriptional repressor on minimal promoter containing element F (that includes an E-box sequence). Binds to element F in an E-box sequence-specific manner. Acts as a transcriptional transactivator on the proximal promoter region of the tartrate-resistant acid phosphatase (TRAP) E-box containing promoter (By similarity). Collaborates with MITF in target gene activation (By similarity). Acts as a transcriptional repressor on minimal promoter containing mu E3 enhancer sequence (By similarity). Binds to mu E3 DNA sequence of the immunoglobulin heavy-chain gene enhancer (By similarity). Binds DNA in a homo-or heterodimeric form.

References

Mansky, K.C., et al. J. Leukoc. Biol. 71(2):304-310(2002)
 Chung, M.C., et al. Biochemistry 40(30):8887-8897(2001)
 Steingrimsson, E., et al. Development 125(23):4607-4616(1998)
 Yasumoto, K., et al. Biochim. Biophys. Acta 1353(1):23-31(1997)
 Zhao, G.Q., et al. Mol. Cell. Biol. 13(8):4505-4512(1993)

Images



TFEC Antibody (Center) (Cat. #AP19475c) western blot analysis in MDA-MB231 cell line lysates (35ug/lane). This demonstrates the TFEC antibody detected the TFEC protein (arrow).

Please note: All products are 'FOR RESEARCH USE ONLY. NOT FOR USE IN DIAGNOSTIC OR THERAPEUTIC PROCEDURES'.