

ASNSD1 Antibody(Center)

Affinity Purified Rabbit Polyclonal Antibody (Pab)

Catalog # AP19490c

Product Information

Application	WB, E
Primary Accession	Q9NWL6
Other Accession	NP_061921.1
Reactivity	Human
Host	Rabbit
Clonality	Polyclonal
Isotype	Rabbit IgG
Clone Names	RB40643
Calculated MW	72080
Antigen Region	380-406

Additional Information

Gene ID	54529
Other Names	Asparagine synthetase domain-containing protein 1, HCV NS3-transactivated protein 1, ASNSD1, NS3TP1
Target/Specificity	This ASNSD1 antibody is generated from rabbits immunized with a KLH conjugated synthetic peptide between 380-406 amino acids from the Central region of human ASNSD1.
Dilution	WB~~1:1000 E~~Use at an assay dependent concentration.
Format	Purified polyclonal antibody supplied in PBS with 0.09% (W/V) sodium azide. This antibody is purified through a protein A column, followed by peptide affinity purification.
Storage	Maintain refrigerated at 2-8°C for up to 2 weeks. For long term storage store at -20°C in small aliquots to prevent freeze-thaw cycles.
Precautions	ASNSD1 Antibody(Center) is for research use only and not for use in diagnostic or therapeutic procedures.

Protein Information

Name	ASNSD1
Synonyms	NS3TP1

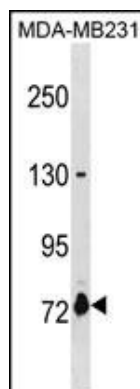
Background

ASNSD1 contains one asparagine synthetase domain and one glutamine amidotransferase type-2 domain.

References

Li, J.W., et al. World J. Gastroenterol. 12(7):1038-1042(2006)

Images



ASNSD1 Antibody (Center) (Cat. #AP19490c) western blot analysis in MDA-MB231 cell line lysates (35ug/lane). This demonstrates the ASNSD1 antibody detected the ASNSD1 protein (arrow).

Please note: All products are 'FOR RESEARCH USE ONLY. NOT FOR USE IN DIAGNOSTIC OR THERAPEUTIC PROCEDURES'.