

# CSF2RA Antibody(C-term)

Affinity Purified Rabbit Polyclonal Antibody (Pab)

Catalog # AP19497b

## Product Information

---

<b>Application</b>	WB, E
<b>Primary Accession</b>	<a href="#">P15509</a>
<b>Other Accession</b>	<a href="#">NP_006131.2</a>
<b>Reactivity</b>	Human
<b>Host</b>	Rabbit
<b>Clonality</b>	Polyclonal
<b>Isotype</b>	Rabbit IgG
<b>Clone Names</b>	RB40748
<b>Calculated MW</b>	46207
<b>Antigen Region</b>	366-394

## Additional Information

---

<b>Gene ID</b>	1438
<b>Other Names</b>	Granulocyte-macrophage colony-stimulating factor receptor subunit alpha, GM-CSF-R-alpha, GMCSFR-alpha, GMR-alpha, CDw116, CD116, CSF2RA, CSF2R, CSF2RY
<b>Target/Specificity</b>	This CSF2RA antibody is generated from rabbits immunized with a KLH conjugated synthetic peptide between 366-394 amino acids from the C-terminal region of human CSF2RA.
<b>Dilution</b>	WB~~1:1000 E~~Use at an assay dependent concentration.
<b>Format</b>	Purified polyclonal antibody supplied in PBS with 0.09% (W/V) sodium azide. This antibody is purified through a protein A column, followed by peptide affinity purification.
<b>Storage</b>	Maintain refrigerated at 2-8°C for up to 2 weeks. For long term storage store at -20°C in small aliquots to prevent freeze-thaw cycles.
<b>Precautions</b>	CSF2RA Antibody(C-term) is for research use only and not for use in diagnostic or therapeutic procedures.

## Protein Information

---

<b>Name</b>	CSF2RA
<b>Synonyms</b>	CSF2R, CSF2RY

<b>Function</b>	Low affinity receptor for granulocyte-macrophage colony- stimulating factor. Transduces a signal that results in the proliferation, differentiation, and functional activation of hematopoietic cells.
<b>Cellular Location</b>	Cell membrane; Single-pass type I membrane protein [Isoform 4]: Secreted.

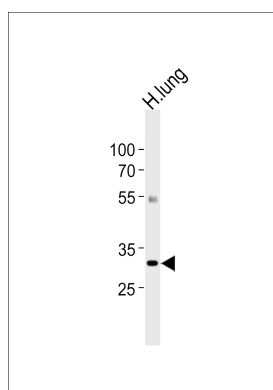
## Background

The protein encoded by this gene is the alpha subunit of the heterodimeric receptor for colony stimulating factor 2, a cytokine which controls the production, differentiation, and function of granulocytes and macrophages. The encoded protein is a member of the cytokine family of receptors. This gene is found in the pseudoautosomal region (PAR) of the X and Y chromosomes. Multiple transcript variants encoding different isoforms have been found for this gene, with some of the isoforms being membrane-bound and others being soluble.

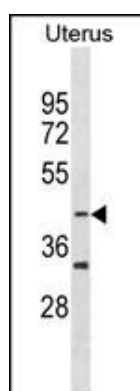
## References

Mirza, S., et al. Biochem. J. 426(3):307-317(2010)  
 Sun, S., et al. Brain Res. 1268, 13-16 (2009) :  
 Suzuki, T., et al. J. Exp. Med. 205(12):2703-2710(2008)  
 Martinez-Moczygemba, M., et al. J. Exp. Med. 205(12):2711-2716(2008)  
 Hansen, G., et al. Cell 134(3):496-507(2008)

## Images



Western blot analysis of lysate from human lung tissue lysate, using CSF2RA Antibody (C-term)(Cat. #AP19497b). AP19497b was diluted at 1:1000 at each lane. A goat anti-rabbit IgG H&L(HRP) at 1:5000 dilution was used as the secondary antibody. Lysate at 35ug per lane.



CSF2RA Antibody (C-term) (Cat. #AP19497b) western blot analysis in human Uterus tissue lysates (35ug/lane). This demonstrates the CSF2RA antibody detected the CSF2RA protein (arrow).

Please note: All products are 'FOR RESEARCH USE ONLY. NOT FOR USE IN DIAGNOSTIC OR THERAPEUTIC PROCEDURES'.