

# CSF3 Antibody(C-term)

Affinity Purified Rabbit Polyclonal Antibody (Pab)

Catalog # AP19503b

## Product Information

---

<b>Application</b>	WB, E
<b>Primary Accession</b>	<a href="#">P09919</a>
<b>Other Accession</b>	<a href="#">NP_000750.1</a>
<b>Reactivity</b>	Human
<b>Host</b>	Rabbit
<b>Clonality</b>	Polyclonal
<b>Isotype</b>	Rabbit IgG
<b>Clone Names</b>	RB41425
<b>Calculated MW</b>	22293
<b>Antigen Region</b>	180-207

## Additional Information

---

<b>Gene ID</b>	1440
<b>Other Names</b>	Granulocyte colony-stimulating factor, G-CSF, Pluripoietin, Filgrastim, Lenograstim, CSF3, C17orf33, GCSF
<b>Target/Specificity</b>	This CSF3 antibody is generated from rabbits immunized with a KLH conjugated synthetic peptide between 180-207 amino acids from the C-terminal region of human CSF3.
<b>Dilution</b>	WB~~1:1000 E~~Use at an assay dependent concentration.
<b>Format</b>	Purified polyclonal antibody supplied in PBS with 0.09% (W/V) sodium azide. This antibody is purified through a protein A column, followed by peptide affinity purification.
<b>Storage</b>	Maintain refrigerated at 2-8°C for up to 2 weeks. For long term storage store at -20°C in small aliquots to prevent freeze-thaw cycles.
<b>Precautions</b>	CSF3 Antibody(C-term) is for research use only and not for use in diagnostic or therapeutic procedures.

## Protein Information

---

<b>Name</b>	CSF3
<b>Synonyms</b>	C17orf33, GCSF
<b>Function</b>	Granulocyte/macrophage colony-stimulating factors are cytokines that act

in hematopoiesis by controlling the production, differentiation, and function of 2 related white cell populations of the blood, the granulocytes and the monocytes-macrophages. This CSF induces granulocytes.

#### Cellular Location

Secreted.

## Background

---

The protein encoded by this gene is a cytokine that controls the production, differentiation, and function of granulocytes. The active protein is found extracellularly. Alternatively spliced transcript variants have been described for this gene.

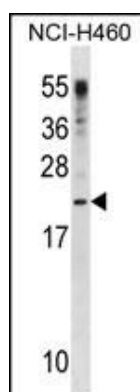
## References

---

Frauenknecht, K., et al. J. Neuroimmunol. 227 (1-2), 1-9 (2010) :  
Romero, R., et al. Am. J. Obstet. Gynecol. 203 (4), 361 (2010) :  
Bailey, S.D., et al. Diabetes Care 33(10):2250-2253(2010)  
Takagi, Y., et al. Thorac Cardiovasc Surg 58(5):304-306(2010)  
Kato, M., et al. Int. Arch. Allergy Immunol. 152 SUPPL 1, 62-66 (2010) :

## Images

---



CSF3 Antibody (C-term) (Cat. #AP19503b) western blot analysis in NCI-H460 cell line lysates (35ug/lane). This demonstrates the CSF3 antibody detected the CSF3 protein (arrow).

Please note: All products are 'FOR RESEARCH USE ONLY. NOT FOR USE IN DIAGNOSTIC OR THERAPEUTIC PROCEDURES'.