

# EIF4B Antibody (C-term)

Purified Rabbit Polyclonal Antibody (Pab)

Catalog # AP1950b

## Product Information

---

<b>Application</b>	WB, IHC-P, E
<b>Primary Accession</b>	<a href="#">P23588</a>
<b>Other Accession</b>	<a href="#">Q8BGD9</a> , <a href="#">Q8WYK5</a>
<b>Reactivity</b>	Human
<b>Predicted</b>	Mouse
<b>Host</b>	Rabbit
<b>Clonality</b>	Polyclonal
<b>Isotype</b>	Rabbit IgG
<b>Clone Names</b>	RB11717
<b>Calculated MW</b>	69151
<b>Antigen Region</b>	546-575

## Additional Information

---

<b>Gene ID</b>	1975
<b>Other Names</b>	Eukaryotic translation initiation factor 4B, eIF-4B, EIF4B
<b>Target/Specificity</b>	This EIF4B antibody is generated from rabbits immunized with a KLH conjugated synthetic peptide between 546-575 amino acids from the C-terminal region of human EIF4B.
<b>Dilution</b>	WB~~1:1000 IHC-P~~1:100~500 E~~Use at an assay dependent concentration.
<b>Format</b>	Purified polyclonal antibody supplied in PBS with 0.09% (W/V) sodium azide. This antibody is prepared by Saturated Ammonium Sulfate (SAS) precipitation followed by dialysis against PBS.
<b>Storage</b>	Maintain refrigerated at 2-8°C for up to 2 weeks. For long term storage store at -20°C in small aliquots to prevent freeze-thaw cycles.
<b>Precautions</b>	EIF4B Antibody (C-term) is for research use only and not for use in diagnostic or therapeutic procedures.

## Protein Information

---

<b>Name</b>	EIF4B
<b>Function</b>	Required for the binding of mRNA to ribosomes. Functions in close association with EIF4-F and EIF4-A. Binds near the 5'-terminal cap of mRNA in presence of EIF-4F and ATP. Promotes the ATPase activity and the

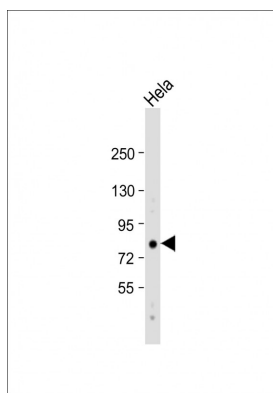
## Background

EIF4B is required for the binding of mRNA to ribosomes. It functions in close association with EIF4-F and EIF4-A by binding near the 5'-terminal cap of mRNA in presence of EIF-4F and ATP. This gene also promotes the ATPase activity and the ATP-dependent RNA unwinding activity of both EIF4-A and EIF4-F

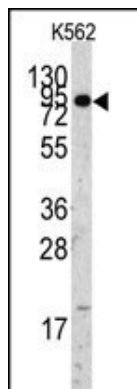
## References

Doepker, R.C., et al., J. Virol. 78(9):4684-4699 (2004).  
Fleming, K., et al., Biochemistry 42(30):8966-8975 (2003).  
Milburn, S.C., et al., EMBO J. 9(9):2783-2790 (1990).

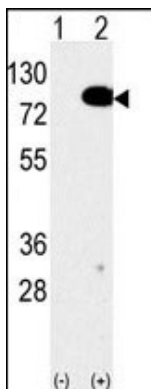
## Images



Anti-EIF4B Antibody (C-term) at 1:1000 dilution + HeLa whole cell lysate Lysates/proteins at 20 µg per lane. Secondary Goat Anti-Rabbit IgG, (H+L), Peroxidase conjugated at 1/10000 dilution. Predicted band size : 69 kDa Blocking/Dilution buffer: 5% NFDM/TBST.

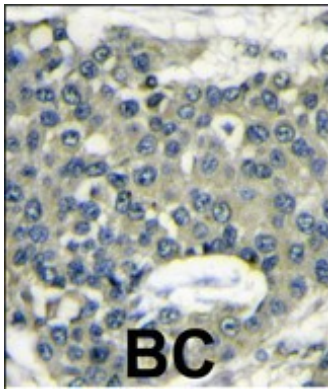


Western blot analysis of anti-EIF4B Antibody (C-term) Pab (Cat.#AP1950b) in K562 cell line lysates (35ug/lane). EIF4B(arrow) was detected using the purified Pab.



Western blot analysis of anti-EIF4B Antibody (C-term) Pab (Cat.#AP1950b) in 293 cell line lysates transiently transfected with the EIF4B gene (2ug/lane). EIF4B(arrow) was detected using the purified Pab.

Formalin-fixed and paraffin-embedded human breast carcinoma reacted with EIF4B Antibody



(C-term)(Cat.#AP1950b), which was peroxidase-conjugated to the secondary antibody, followed by DAB staining. This data demonstrates the use of this antibody for immunohistochemistry; clinical relevance has not been evaluated.

Please note: All products are 'FOR RESEARCH USE ONLY. NOT FOR USE IN DIAGNOSTIC OR THERAPEUTIC PROCEDURES'.